



Notice of meeting of

Scrutiny Management Committee

To: Councillors Galvin (Chair), Aspden, Pierce (Vice-Chair),
Scott, Simpson-Laing, Taylor, R Watson and Waudby

Date: Tuesday, 24 March 2009

Time: 5.00 pm

Venue: The Guildhall

AGENDA

1. **Declarations of Interest**

At this point in the meeting, Members will be invited to declare any personal or prejudicial interests they may have in the business on the agenda.

2. **Minutes** (Pages 3 - 12)

To approve and sign the minutes of the Scrutiny Management Committee meeting held on 23 February 2009 and the minutes of the "Cultural Quarter" Ad Hoc Scrutiny Committee held on 18 February 2009, as the Ad Hoc Committee has now held its final meeting.

3. **Public Participation**

At this point in the meeting members of the public who have registered their wish to speak regarding an item on the agenda or an issue within the Committee's remit can do so. Anyone who wishes to register or requires further information is requested to contact the Democracy Officer on the contact details listed at the foot of this agenda. The deadline for registering is Monday 23 March 2009 at 5 pm.

4. Update on the Implementation of Recommendations of Previous Scrutiny Reviews (Pages 13 - 16)

This report provides Members with update information on the implementation of recommendations made as a result of a previously completed review on Reducing Carbon Emission.

5. Final Report of the Cultural Quarter Ad Hoc Scrutiny Review (Pages 17 - 114)

This report presents the final report of the “Cultural Quarter” Ad Hoc Scrutiny Committee regarding their review on the proposed “Cultural Quarter” for York.

6. Planning Enforcement Ad Hoc Scrutiny: Request to Extend Timeframe (Pages 115 - 118)

This report asks Members to agree to an extension to the timeframe originally agreed for the Planning Enforcement Ad Hoc Scrutiny Review.

7. Local Government and Public Involvement in Health Act 2007 - Introduction of Councillor Call for Action (Pages 119 - 122)

This report informs Members that, as from 1 April 2009, Councillor Call for Action (CCfA) will come into force. The report highlights how the overview and scrutiny function in York has responded to the forthcoming new requirements of the Local Government and Public Involvement in Health Act 2007.

8. Any other business which the Chair decides is urgent under the Local Government Act 1972

Democracy Officer:

Name: Jayne Carr

Contact details:

- Telephone – (01904) 552030
- E-mail – jayne.carr@york.gov.uk

For more information about any of the following please contact the Democracy Officer responsible for servicing this meeting:

- Registering to speak
- Business of the meeting
- Any special arrangements
- Copies of reports

Contact details are set out above.

This page is intentionally left blank

About City of York Council Meetings

Would you like to speak at this meeting?

If you would, you will need to:

- register by contacting the Democracy Officer (whose name and contact details can be found on the agenda for the meeting) **no later than 5.00 pm** on the last working day before the meeting;
- ensure that what you want to say speak relates to an item of business on the agenda or an issue which the committee has power to consider (speak to the Democracy Officer for advice on this);
- find out about the rules for public speaking from the Democracy Officer.

A leaflet on public participation is available on the Council's website or from Democratic Services by telephoning York (01904) 551088

Further information about what's being discussed at this meeting

All the reports which Members will be considering are available for viewing online on the Council's website. Alternatively, copies of individual reports or the full agenda are available from Democratic Services. Contact the Democracy Officer whose name and contact details are given on the agenda for the meeting. **Please note a small charge may be made for full copies of the agenda requested to cover administration costs.**

Access Arrangements

We will make every effort to make the meeting accessible to you. The meeting will usually be held in a wheelchair accessible venue with an induction hearing loop. We can provide the agenda or reports in large print, electronically (computer disk or by email), in Braille or on audio tape. Some formats will take longer than others so please give as much notice as possible (at least 48 hours for Braille or audio tape).

If you have any further access requirements such as parking close-by or a sign language interpreter then please let us know. Contact the Democracy Officer whose name and contact details are given on the order of business for the meeting.

Every effort will also be made to make information available in another language, either by providing translated information or an interpreter providing sufficient advance notice is given. Telephone York (01904) 551550 for this service.

যদি যথেষ্ট আগে থেকে জানানো হয় তাহলে অন্য কোন অর্ধাতে তথ্য জানানোর জন্য সব ধরনের চেষ্টা করা হবে, এর জন্য দরকার হলে তথ্য অনুবাদ করে দেয়া হবে অথবা একজন দোঅবী সর্ববরাহ করা হবে। টেলিফোন নম্বর (01904) 551 550।

Yeteri kadar önceden haber verilmesi koşuluyla, bilgilerin terümesini hazırlatmak ya da bir tercüman bulmak için mümkün olan herşey yapılacaktır. Tel: (01904) 551 550

我們竭力使提供的資訊備有不同語言版本，在有充足時間提前通知的情況下會安排筆譯或口譯服務。電話 (01904) 551 550。

اگر مناسب وقت سے اطلاع دی جاتی ہے تو ہم معلومات کا ترجمہ مہیا کرنے کی پوری کوشش کریں گے۔ ٹیلی فون (01904) 551 550

Informacja może być dostępna w tłumaczeniu, jeśli dostaniemy zapotrzebowanie z wystarczającym wyprzedzeniem. Tel: (01904) 551 550

Holding the Executive to Account

The majority of councillors are not appointed to the Executive (38 out of 47). Any 3 non-Executive councillors can 'call-in' an item of business from a published Executive (or Executive Member Advisory Panel (EMAP)) agenda. The Executive will still discuss the 'called in' business on the published date and will set out its views for consideration by a specially convened Scrutiny Management Committee (SMC). That SMC meeting will then make its recommendations to the next scheduled Executive meeting in the following week, where a final decision on the 'called-in' business will be made.

Scrutiny Committees

The purpose of all scrutiny and ad-hoc scrutiny committees appointed by the Council is to:

- Monitor the performance and effectiveness of services;
- Review existing policies and assist in the development of new ones, as necessary; and
- Monitor best value continuous service improvement plans

Who Gets Agenda and Reports for our Meetings?

- Councillors get copies of all agenda and reports for the committees to which they are appointed by the Council;
- Relevant Council Officers get copies of relevant agenda and reports for the committees which they report to;
- Public libraries get copies of **all** public agenda/reports.

City of York Council

Committee Minutes

MEETING

SCRUTINY MANAGEMENT COMMITTEE

DATE

23 FEBRUARY 2009

PRESENT

COUNCILLORS GALVIN (CHAIR), ASPDEN,
PIERCE (VICE-CHAIR), SCOTT, SIMPSON-LAING,
TAYLOR, R WATSON AND WAUDBY

32. DECLARATIONS OF INTEREST

Members were invited to declare at this point in the meeting any personal or prejudicial interests they might have in the business on the agenda.

Councillor Pierce declared a personal non-prejudicial interest in item 5 – Update on the Work of Health Scrutiny Committee as a former member of the Community Health Council.

Councillor Watson declared a personal non-prejudicial interest in item 4 – Recommendations of Previous Scrutiny Reviews, as he was involved in a charity that had links with the York Furniture Re-use Store.

33. MINUTES

RESOLVED: That the minutes of the meeting of the Scrutiny Management Committee held on 17 December 2008 be signed as a correct record.

34. PUBLIC PARTICIPATION

It was reported that there had been no registrations to speak at the meeting under the Council's Public Participation Scheme.

35. UPDATE ON THE IMPLEMENTATION OF RECOMMENDATIONS OF PREVIOUS SCRUTINY REVIEWS

Members received a report with update information on the implementation of recommendations made as a result of previously completed scrutiny reviews on Recycling and Re-use, and City Centre Retailing.

The review of Recycling and Re-use had been completed in September 2006 and Members of SMC had signed off many of the recommendations already. Annex A to the report provided an update on those that were still outstanding.

The review of City Centre Retailing had been completed in June 2004 and Members of SMC had also signed off many of the recommendations

already. Annex B to the report provided an update on those that were still outstanding.

Members were asked to consider signing off those recommendations where implementation had been completed or to request further updates to clarify any outstanding recommendations.

Officers gave an update on the work that had been carried out to implement the recommendations:

Recycling and Re-use Review

Recommendation 2: Trials of various types of containers were taking place. The next phase would be to source a collection vehicle that was suitable for use in narrow streets. Subject to funding being available, the department was on course to achieve the government target of at least two materials being collected kerbside by 2010.

Recommendation 3: A report had been considered by EMAP on the issue of paying re-use credits. Such a system would be challenging and costly to implement. Members suggested that there was a need for the York Furniture Re-use Store to be better advertised and promoted.

Recommendation 4: Consideration had been given to paying re-use credits for the Bike Rescue Project. However, such an arrangement would have proved difficult, as it would have been necessary to demonstrate that the items had been presented to the Council as waste. In most circumstances the bikes were given directly to the Bike Rescue Project. The Council therefore supported the project in other ways, including a discount in business rates.

Recommendation 5: Cross-corporate work was continuing to ensure benefit from potential funding opportunities. This was included within the Waste Minimising Strategy.

City Centre Retailing Review

Recommendation 15: Map panels had now been updated and interactive screens were in place around the city. The new Visitor Information Centre was scheduled to open in May.

Members suggested that the following issues be explored:

- The possibility of renaming the Shambles Car Park as its present name did not reflect its location and was confusing to some visitors.
- The feasibility of using corporate montages to cover empty premises.
- Investigation as to the purposes for which the electronic information panels were being used.

RESOLVED: (i) That the contents of the report be noted.

(ii) That the following recommendations be signed-off as they had been fully implemented:

- Recommendation 4 of the Recycling and Re-use Review
- Recommendation 5 of the Recycling and Re-use Review
- Recommendation 15 of the City Centre Retailing Review

(iii) That Members noted the work completed to date in implementing the following recommendations but were not satisfied that they could be signed-off as complete¹:

- Recommendation 2 of the Recycling and Re-use Review
- Recommendation 3 of the Recycling and Re-use Review

REASON: To raise awareness of those recommendations which had still to be implemented.

Action Required

1 To update the recommendation tracking master document GR and diarise provision of a further update within 3-6 months

36. UPDATE ON THE WORK OF HEALTH SCRUTINY COMMITTEE

The Chair and Vice-Chair of the Health Scrutiny Committee had forwarded their apologies for absence for this item.

Members received a report summarising the work undertaken by the Health Scrutiny Committee since November 2008.

Discussion took place regarding the ways in which the Health Scrutiny Committee would work with LINKs. It was noted that LINKs were still determining their priorities and the mechanisms by which they would be carrying out their work. More information would be known after the AGM had taken place. Work was being undertaken regarding the possibility of LINKs being consulted and their comments being fed into feasibility studies for new scrutiny topics.

Members stressed the importance of ensuring that there was a baseline in place in order that the performance of LINKs could be evaluated.

- RESOLVED: (i) That the contents of the report be noted.
- (ii) That the Health Scrutiny Committee be commended on the work that it had carried out.
- (iii) That, in three months' time, an update be provided on the work that LINKs was carrying out¹.

REASON: To inform Scrutiny Management Committee of the work and progress of the Health Scrutiny Committee.

Action Required

1 An update on the work of LINKs to be included in next Health Scrutiny Report to SMC GR

37. SCRUTINY REPORT

Members received a draft Scrutiny Report detailing all of the reviews that had been completed between May 2006 and December 2008.

Members were asked to consider whether they wished to make any amendments to the report prior to its presentation to Full Council.

The following amendments were agreed:

- That, in view of the period covered by the report, the word "annual" be omitted from the title and text of the report.
- That the presentation of the report be revised to ensure that it was easily accessible to readers, including those with visual impairments.

RESOLVED: That the Scrutiny Report for the period May 2006 to December 2008 be approved by Scrutiny Management Committee subject to the agreed amendments¹.

REASON: To enable its presentation to Full Council, in line with constitutional requirements.

Action Required

1 Amendments to be made to the report as agreed GR

38. PROTOCOL FOR JOINT SCRUTINY REVIEWS

Members received a report which presented a revised protocol to enable York to host joint scrutiny reviews should the need arise. A draft protocol

had been presented at Scrutiny Management Committee on 17 November 2008. Members had agreed to adopt the protocol on the proviso that minor amendments were made, and had requested that the protocol be presented to them again once these had been incorporated.

Members' attention was drawn to the following corrections to the report:

- Paragraph 4 (iii) of the report should read "*[In York, under the current Council composition this would entitle the 2 largest groups to nominate 2 Members each]*"
- Paragraph 4 (iv) of the report should read "*[In York, under the current Council composition this would entitle the 2 largest groups to nominate 2 members each if they were the host, 2:1 if not host - unless they wished to waive proportionality]*"

Members were asked to consider whether to adopt the amended protocol for joint scrutiny reviews with or without further amendments.

Discussion took place as to how best to ensure political proportionality in the composition of any joint scrutiny committee and whether account should be taken of the size of population covered by the authority or whether the authority was a unitary, district or county council.

It was noted that consultation on the protocol had not yet taken place with neighbouring authorities.

RESOLVED: That the protocol, as detailed in Annex A of the report, be approved subject to paragraph 3.2 being amended to read¹:

"In accordance with the above, Joint Committees will be composed of Councillors drawn from local authorities in the following terms:-

- *Where 4 or more local authorities participate – then each participating authority will nominate 2 Councillors from their relevant Overview & Scrutiny Committee.*
- *Where 2 or 3 local authorities participate then each participating authority will nominate 4 Councillors from their relevant Overview & Scrutiny Committee."*

REASON: To ensure Members can fully participate in scrutiny work that may impact on more than one geographical area.

Action Required

1 To update the protocol to incorporate the agreed amendments

GR

Councillor J Galvin, Chair

[The meeting started at 5.30 pm and finished at 7.00 pm].

This page is intentionally left blank

MEETING	'CULTURAL QUARTER' AD HOC SCRUTINY COMMITTEE
DATE	18 FEBRUARY 2009
PRESENT	COUNCILLORS TAYLOR (CHAIR), CRISP, FUNNELL, GALVIN, HOGG (JOINED THE MEETING AT 4.55PM) AND HYMAN
APOLOGIES	SIR RON COOKE

20. DECLARATIONS OF INTEREST

Members were invited to declare at this point in the meeting any personal or prejudicial interests they might have in the business on the agenda.

Councillor Taylor declared a personal non-prejudicial interest in agenda item 4 ('Cultural Quarter' – Draft Final Report) as an employee of City Screen in York.

Councillor Crisp declared a personal non-prejudicial interest in agenda item 4 ('Cultural Quarter' – Draft Final Report) as a member of the Board of York Theatre Royal.

21. PUBLIC PARTICIPATION

It was reported that there had been no registrations to speak at the meeting under the Council's Public Participation Scheme.

22. MINUTES

RESOLVED: That the minutes of the last meeting of the Committee held on 29 January 2009 be approved and signed by the Chair as a correct record subject to the following amendment:

In Minute 19 (ii) Draft Recommendations – in the second bullet point the deletion of the words 'the University and the developer of St Leonard's Place' and their replacement with 'the University of York and Rushbond PLC' in reference to the partner organisations.¹

Action Required

1. Amend minutes as indicated.

GR

23. 'CULTURAL QUARTER' - DRAFT FINAL REPORT

Consideration was given to the draft final report of the 'Cultural Quarter' Ad Hoc Scrutiny Committee and the 8 recommendations, which had arisen

from the Committee's review. Members were reminded that this topic had been registered in early 2008 by Cllr Hogg to examine the 'Vision' developed in 2007 for a Cultural Quarter for York, linking the city centre with development sites in York North West.

Officers confirmed that the recommendations should be seen within the context of York being a 'Cultural City' and its culture not being confined to any one area.

The Scrutiny Officer stated that, with Member's agreement, she would also include an additional paragraph, in the body of the report, to further explain details of the government initiative for British Cities of Culture.

Officers circulated an amended diagram of the suggested model for the cultural route(s) or linkages to act as a guide between cultural activities produced by Sir Ron Cooke for inclusion in the report. Also circulated was an email from the Legal Department, following guidance sought after the last meeting, in relation to the Committee's wish to send a letter to the Head of Planning regarding plans to introduce ticket barriers at York Railway Station.

Members were informed that the Visit York business plan referred to in Annex F (Towards a Cultural Quarter Business Plan), paragraph 2.5 of the report, had now been completed. It was proposed to update this paragraph in order to reflect the new vision that had been agreed.

Councillors Crisp, Funnell and Galvin declared that, as Members of the Planning Committee, they could not take part in consideration of matters relating to York Railway Station and plans to introduce ticket barriers and they left the room and took no part in discussion thereon.

The Scrutiny Officer confirmed that she would collate the suggested amendments and circulate to Members, for agreement, a tracked changes copy of the report. She also confirmed that the presentation of the Annexes would be improved for inclusion in the final report. ¹.

Officers thanked the Scrutiny Committee for their hard work and careful, in depth examination of this topic.

RESOLVED: (i) That subject to the following amendments the final report of the 'Cultural Quarter' Ad Hoc Scrutiny Committee, be agreed:

- Addition of a paragraph of explanation in relation to the government initiative on British City of Culture.
- In paragraph 64 (The Proposed Boundary of the 'Cultural Quarter') the deletion of the word 'boundaries' in the third line and its replacement with 'boundary of the investment zone'.
- Update paragraph 2.5 in Annex F in relation to the Visit York business plan.
- Amend heading in Annex G to 'Executive Summary' rather than 'Scrutiny Summary'. ².

(ii) That the following recommendations of the 'Cultural Quarter' Ad Hoc Scrutiny Committee, as amended be agreed:

1. That City of York Council takes the lead in the comprehensive business plan **and design master plan** for this area, especially in terms of implementing any changes to the public realm works, pedestrian links etc between the various investment areas.

Reason: To ensure that a robust business plan is in place.

2. That, with the backing of partner organisations*, the Chief Executive of City of York Council opens negotiations with Yorkshire Forward and other appropriate public bodies with regard to funding the proposed cultural master plan for the city and seeking major investment for realising the opportunities available for improvements to the public realm and civic spaces.

*Yorkshire Museums Trust, Rushbond PLC, York Theatre Royal, York Minster, National Railway Museum, **Kings Manor Area (York University)**, Visit York, York @ Large and appropriate departments within the local authority.

Reason: To source appropriate funding streams.

3. In view of the fact that development of the York North West site will create more traffic both vehicular and pedestrian:
 - i. The Committee recommends that substantial improvements be made to the area known as 'Marble Arch' (both road and pedestrian tunnels).
 - ii. The Committee recommends that City of York Council should seek to agree a new pedestrian/cycle river crossing (linking the National Railway Museum and Museum Gardens) as part of the York North West development plans.

Reason: To ensure that access and egress from the York North West site is appropriate and the area around the NRM receives better connectivity to the rest of the city.

4. That the Head of Arts & Culture prepares the relevant documentation to propose York as a British City of Culture, should this proposed government initiative go ahead.

Reason: To promote the city as an outstanding centre of culture.

5. That a wider strategy for 'Cultural Development Areas' within the city as a whole, be pursued by York @ Large to engage other cultural attractions and leisure providers e.g. a Castle Area.

Reason: To ensure cultural inclusivity across the city.

6. That the boundary of the proposed 'Cultural Quarter' be used for investment purposes only. **The position of a fixed boundary is not the most appropriate for a 'Cultural Quarter' in the long term and the position of a permeable boundary should, therefore,** be revisited by York @ Large at a future date.

Reason: To find the most beneficial **way of defining** the area.

7. That York @ Large be requested to revisit the name 'Cultural Quarter' as part of the work on the comprehensive business plan and the group should consider either a geographical or historical name for the area.

Reason: To reflect the views of the Committee and of comments made by local residents.

8. That the recommendations of the report commissioned by City of York Council to look at the future of York City Archives be fully implemented to ensure that the Archives are suitably funded and are presented as a key part of the 'Cultural Quarter' area.³

Reason: To ensure the future of the Archives within the city.

- (iii) That the amended version of the diagram, showing the suggested cultural route, submitted by Sir Ron Cooke, be replaced as Annex J in the final report subject to the amendment of the reference to 'St Mary's + Quarter' to 'Proposed 'Cultural Quarter'';⁴
- (iv) That no further discussion or action be undertaken in relation to the proposals for barriers at York Station by NXEC, following withdrawal of the planning application.

Action Required

1. Tracked changes copy of final report to be circulated to Members.
- 2-4. Final report to be amended as indicated.

GR
GR

CLLR D TAYLOR, Chair

[The meeting started at 4.40 pm and finished at 5.10 pm].



Scrutiny Management Committee

24th March 2009

Report of the Head of Civic, Legal, Democratic Services

Update on Implementation of Recommendations of Previous Scrutiny Reviews

Summary

1. This report provides Members with update information on the implementation of recommendations made as a result of a previously completed scrutiny review on Reducing Carbon Emissions.

Background

2. At a previous meeting of Scrutiny Management Committee, Members requested an update on the implementation of the recommendations made as a result of all completed scrutiny reviews since 2004, which were subsequently approved by the Executive. Many have been presented and those where implementation has been completed have been signed off.

Consultation

3. Relevant officers have provided update information on the recommendations arising from the review and will be in attendance at the meeting to answer any questions.

Analysis

4. The review on Reducing Carbon Emissions was completed in September 2006. Members of SMC have signed off many of the recommendations already and this report presents updated information on those that are still outstanding. The update on the implementation of the recommendations is provided at Annex A to this report.

Options

5. With regard to Annex A, Members may choose to:
 - a. Sign off those recommendations where implementation has been completed, or
 - b. Request further updates to clarify any outstanding recommendations

Corporate Strategy

6. The process of monitoring the implementation of approved recommendations will evidence our stated value to 'encourage improvement in everything we do'.

Implications

7. There are no known Financial, Human Resources, Equalities, Legal, ITT or other implications associated with the recommendations in this report.

Risk Management

8. In compliance with the Council's risk management strategy, there are no known risks associated with this report.

Recommendations

9. Members are asked to note the contents of this report and agree which recommendations arising from the Reducing Carbon Emissions scrutiny review can be signed off.

Reason: To raise awareness of those recommendations which have still to be implemented.

Contact Details

Author:

Tracy Wallis
Scrutiny Officer
Scrutiny Services
01904 551714

Chief Officer Responsible for the report:

Quentin Baker
Head of Civic, Legal and Democratic Services
01904 551030

Report Approved



Date

12 March 2009

Wards Affected:

All



For further information please contact the author of the report

Background Papers: None

Annexes

Annex A – Update on Reducing Carbon Emissions

Board and Topic	Rec No.	Recommendation as approved by the Executive on 7 November 2006	Update on Recommendations as of July 2008	Update on Recommendations as of February 2009
Reducing Carbon Emissions Scrutiny Sub-Committee (Review Completed Sept 2006)	1	<p>That Climate Change Strategies and Action Plans are developed by the Council's Sustainability Officer as a matter of urgency. This to be done with a view to best practice approaches used by other Local Authorities. It is acknowledged that the Council is already well advanced in developing its strategies for dealing with climate change, in so far as it has powers to do so, and anticipates that a consultants report will be submitted to Executive shortly. At that time the SMC may, of course if they wish, choose to review the contents of the report".</p>	<p>Sustainability Officer is leading a core group from the LSP - Environment Partnership - to create a Climate Change Strategy for York. The strategy will target mitigation and adaptation to future climate change and the group is currently drafting and writing the evidence base for this strategy (including best practice from other local authorities). By Spring 2009.</p>	<p>Sustainability Officer is leading a core group from the LSP - Environment Partnership - to create a Climate Change Strategy for York. The group is currently drafting and writing the evidence base for this strategy. Delays have occurred due to resourcing issues and due to the delayed publication of the regional climate change action plan and adaptation study. Both are important elements of the York strategy's evidence base. A bid has also be submitted for additional funding to support outstanding work on the evidence base and to create a city wide engagement campaign that will lead to the creation of the strategy's action plans. A revised briefing note and implementation timetable will be circulated across the LSP / CYC shortly.</p>

Board and Topic	Rec No.	Recommendation as approved by the Executive on 7 November 2006	Update on Recommendations as of July 2008	Update on Recommendations as of February 2009
Reducing Carbon Emissions Scrutiny Sub-Committee (Review Completed Sept 2006)	4	<p>That the authority enforce Parts L and F of the Building Regulations as a matter of urgency, resolving any training and resourcing issues that may need addressing, whilst recognising that the deployment of resources will be influenced by the Councils annual budget build process</p>	<p>Building Control continue to enforce Parts F&L of the Building Regulations. The necessary training has taken place for the current legislation, however it is proposed to amend Part L (Energy Conservation) within the next year so retraining may be required. It is also proposed to create further links between the Building Regulations and the Code for Sustainable Homes, however no time frame has been set for this.</p>	<p>BcC Surveyors will be attending courses on the Code for Sustainable Homes over the next few months.</p>
	8	<p>That the Housing Strategy & Enabling Group - Housing Standards & Adaptations Officer and other officers in housing where relevant work with York EEAC officers consult upon, devise and adopt a 'Energy Efficiency and Thermal Comfort Strategy and Action Plan' for the authority commencing this year. The Officers are recommended to use the Regional Action Plan (Annex C) NEA guidance (Annex F) and activities outlined at paragraph 50 of this report as a primary steer in shaping the process</p>	<p>Have just completed a PSSCS the results of which are currently being analysed to provide the base line evidence for a Private Sector Renewal Strategy which will include energy efficiency and thermal comfort measures, linked to fuel poverty. This work will be completed by December 2008.</p>	<p>The Fuel Poverty Action Plan will form part of the Private Sector Housing Strategy and this will be completed in April 2009. As part of this we have submitted 2 LAA bids the first for the hot spot coordinators scheme and the second for the rent well, rent warm scheme.</p>
<p>Scrutiny Comment as of July 2008: Recs 1,4 & 8 to be looked at again in Early 2009</p>				



Scrutiny Management Committee**24 March 2009**

Report of the Head of Civic, Legal & Democratic Services

Final Report of the 'Cultural Quarter' Ad Hoc Scrutiny Committee**Summary**

1. This report presents the final report of the 'Cultural Quarter' Ad Hoc Scrutiny Committee regarding their review on the proposed 'Cultural Quarter' for York.

Background

2. In coming to a decision to review this topic, the Committee recognised certain key objectives and the following remit was agreed:

Aim

3. To contribute towards achieving a long-term direction for the area between the National Railway Museum (NRM), York Railway Station and the Minster, and to consider any positive and/or adverse effects on the city in doing so.

Objectives

- i. To understand the Council's strategic approach, and that of its key partners, to the cultural design for the area.
- ii. To contribute to a business plan for achieving the required funding for developing the area into a 'Cultural Quarter'
- iii. To develop and establish some key principles, for guiding a collaborative approach to cultural development in the future, including connectivity to other areas of the city.

Consultation

4. As part of the review the following organisations and individuals were consulted:
 - Head of Arts & Culture at City of York Council
 - External Relations Manager at Visit York
 - The Chief Executive & the Director of Finance and Business Development at the York Museums Trust
 - Officers and Elected Members at Gateshead Council

- Officers at Newcastle City Council
- York Theatre Royal
- Head of Libraries & Heritage – City of York Council
- Representatives of the National Railway Museum
- Dean of York Minster
- Representatives of St John’s University
- Representative of Rushbond PLC
- Various Officers in the City Strategy Directorate at City of York Council
- Members of the public at a public drop in session held on 4th November 2008
- Public Affairs & Stakeholder Manager and the Head of Property at National Express East Cost

Options

5. Having considered the findings contained within the final report and its annexes attached, Members may chose to support all, some or none of the recommendations shown in paragraph 7 of this report, and provide their comments prior to the report being considered by the Executive.

Analysis

6. In regards to the aims and objectives of this review, the final report attached analyses all of the information gathered.

Summary of Recommendations Arising from the Review

7. The recommendations arising from the ‘Cultural Quarter’ Ad Hoc Scrutiny Review are:

The following recommendations should be seen within the context of York being a ‘Cultural City’ and its culture not being confined to any one area.

- i. That City of York Council takes the lead in the comprehensive business plan and design masterplan for this area, especially in terms of implementing any changes to the public realm works, pedestrian links etc between the various investment areas.

REASON: To ensure that a robust business plan and design masterplan are in place.

- ii. That, with the backing of partner organisations*, the Chief Executive of City of York Council opens negotiations with Yorkshire Forward and other appropriate public bodies with regard to funding the proposed cultural master plan for the city and seeking major investment for realising the opportunities available for improvements to the public realm and civic spaces.

*Yorkshire Museums Trust, Rushbond PLC, York Theatre Royal, York Minster, National Railway Museum, Kings Manor (University of York), Visit York, York @ Large and appropriate departments within the local authority.

REASON: To source appropriate funding streams.

- iii. In view of the fact that development of the York North West site will create more traffic both vehicular and pedestrian:
 - i. The Committee recommends that substantial improvements be made to the area known as 'Marble Arch' (both road and pedestrian tunnels).
 - ii. The Committee recommends that City of York Council should seek to agree a new pedestrian/cycle river crossing (linking the National Railway Museum and Museum Gardens) as part of the York North West development plans.

REASON: To ensure that access and egress from the York North West site is appropriate and the area around the NRM receives better connectivity to the rest of the city.

- iv. That the Head of Arts & Culture prepares the relevant documentation to propose York as a British City of Culture, should this proposed government initiative go ahead.

REASON: To promote the city as an outstanding centre of culture.

- v. That a wider strategy for 'Cultural Development Areas' within the city as a whole, be pursued by York @ Large to engage other cultural attractions and leisure providers e.g. a Castle Area.

REASON: To ensure cultural inclusivity across the city.

- vi. That the boundary of the proposed 'Cultural Quarter' be used for investment purposes only. That a fixed boundary is not the most appropriate for a 'Cultural Quarter' in the long term and the position of a permeable boundary should, therefore, be revisited by York @ Large at a future date.

REASON: To find the most beneficial way of defining the area.

- vii. That York @ Large be requested to revisit the name 'Cultural Quarter' as part of the work on the comprehensive business plan and the group should consider either a geographical or historical name for the area.

REASON: To reflect the views of the Committee and of comments made by local residents.

- viii. That the recommendations of the report commissioned by City of York Council to look at the future of York City Archives be fully implemented to ensure that the Archives are suitably funded and are presented as a key part of the 'Cultural Quarter' area.

REASON: To ensure the future of the Archives within the city.

Corporate Strategy – Priorities & Direction

8. This review related to the following corporate priority for improvement of this Council:

‘Improve the actual and perceived condition and appearance of the City’s streets, housing estates and publicly accessible spaces.’

Implications

9. **Financial** – Financial implications may arise for CYC if all the recommendations in the final report were to be fully implemented. CYC would need to source funding (both internal & external) for major works to the public realm, the upkeep of the Archives and production of appropriate business and master plans. As there is currently no additional funding available, these financial implications would need to be addressed in more detail in future reports to Members should the Executive approve the recommendations arising from this scrutiny review.
10. **Legal** – There are no known legal implications associated with the recommendations arising from this review
11. **Human Resources** – The Head of Arts and Culture led on this review within her service; it may have further impact on her service in terms of putting forward proposals for York to be a British City of Culture. It may also impact on the resources of the Economic Development Team within the City strategy Directorate in terms of producing a comprehensive business plan and design master plan. Any resource issues would need to be addressed in more detail should the Executive approve the recommendations arising from this scrutiny review.
12. There are no known Equalities, Property, Crime & Disorder, or other implications associated with the recommendation within this report.

Risk Management

13. There are no known risks associated with the recommendations within this cover report or with the recommendations arising from the review.

Recommendations

14. Members are asked to note the contents of the attached final report and its annexes and provide comments on the recommendations as shown in paragraph 7 of this report.

Reason: To inform the Executive’s consideration of the final report.

Contact Details

Author:

Tracy Wallis
Scrutiny Officer
Scrutiny Services
Tel: 01904 551714

Chief Officer Responsible for the report:

Quentin Baker
Head of Civic, Legal & Democratic Services
Tel: 01904 551004

Report Approved

Date 12 March 2009

Specialist Implications Officers

Finance

Patrick Looker
Finance Manager
EXT: 1633

Richard Hartle
Head of Finance
Learning, Culture & Children's Services
Ext: 4225

Wards Affected: Guildhall, Holgate & Micklegate

All

For further information please contact the author of the report

Background Papers:

Listed within the Final Report

Annexes

Annex 1 – Final Report

- Annex A** Questions used as a premise for investigating other cultural areas.
- Annex B** Timings and costings for stakeholders' future plans
- Annex C** Further information from the NRM and Rushbond PLC
- Annex D** Timings and costings for York St. John University
- Annex E** Further information from York St. John University
- Annex F** Draft Business Plan
- Annex G** Executive Summary of Draft Business Plan
- Annex H** Public Drop in Session Results
- Annex I** LDF & CCAAP Information
- Annex J** Sir Ron Cooke's Suggested Model

This page is intentionally left blank



'Cultural Quarter' Ad Hoc Scrutiny Committee**18 February 2008****'Cultural Quarter' – Draft Final Report****Background**

1. This topic was originally registered in early 2008 by Councillor Hogg to examine the 'Vision' developed in 2007 for a Cultural Quarter for York, linking the city centre with development sites in York North West. He suggested using the 2007 'Vision' document to explore the relationship between the six areas of the quarter (area 1 to include the Railway Station), including pedestrian and vehicular movement, design, open spaces, a river crossing, performance areas, lighting, landscaping, cultural production, promotion and public art.
2. The aim of this vision is to generate substantially more external funding than that which is currently being achieved through an ad hoc approach. The 'Vision' document recognises that getting the link between the city centre and York North West right, will support and guide future city centre development.
3. In coming to a decision to review the topic, the Scrutiny Management Committee recognised certain key objectives and the following remit was agreed.

Aim

4. To contribute towards achieving a long-term direction for the area between the National Railway Museum (NRM), York Railway Station and the Minster, and to consider any positive and/or adverse effects on the city in doing so.

Objectives

- i. To understand the Council's strategic approach, and that of its key partners, to the cultural design for the area.
- ii. To contribute to a business plan for achieving the required funding for developing the area into a 'Cultural Quarter'.
- iii. To develop and establish some key principles, for guiding a collaborative approach to cultural development in the future, including connectivity to other areas of the city.

Consultation

5. As part of the review the following organisations and individuals were consulted:

- Head of Arts & Culture at City of York Council
 - External Relations Manager at Visit York
 - The Chief Executive & the Director of Finance and Business Development at the York Museums Trust
 - Officers and Elected Members at Gateshead Council
 - Officers at Newcastle City Council
 - York Theatre Royal
 - Head of Libraries & Heritage – City of York Council
 - Representatives of the National Railway Museum
 - Dean of York Minster
 - Representatives of St John's University
 - Representative of Rushbond PLC
 - Various Officers in the City Strategy Directorate at City of York Council
 - Members of the public at a public drop in session held on 4th November 2008
 - Public Affairs & Stakeholder Manager and the Head of Property at National Express East Cost
6. During the course of the review several speakers had addressed the Committee via the Council's Public Participation Scheme; details of the points they addressed are listed below.

7. Minster Quarter

A representative of the Minster Quarter addressed the Committee at their formal meeting on 16th December 2008. He gave details of the launch of the Minster Quarter and how stakeholders representing attractions in the area, businesses and a retail sector were working together. This was linked to the City Centre Area Action Plan (CCAAP) and was a new approach to urban governance.

Committee Comment

Whilst there was an overlap between the Minster Quarter and the proposed 'Cultural Quarter' it was not in any way detrimental as partnership working was crucial to the success of both the Minster Quarter and the proposed 'Cultural Quarter'.

8. Arts Barge Project

At the same meeting on 16th December 2008, a representative of the Arts Barge Project attended to inform Members that they were intending to provide a floating cultural centre on the River Ouse.

Committee Comment

Members welcome this project and wished the Arts Barge representatives luck with such an exciting venture. It was, however, noted that the Project would not be within the boundaries of the proposed 'Cultural Quarter'.

9. St John's University

A representative of York St John University attended the meeting on 16th December 2008 to further urge Members to include York St John University within the boundaries of the 'Cultural Quarter'.

10. Yorkshire Gardens Trust

A letter had been received from the Yorkshire Gardens Trust regarding the idea of setting up a permanent display to celebrate York's horticultural achievements, possibly within the Museums Gardens. To this effect, the Chairman of the Trust addressed the Committee at their formal meeting on 29th January 2009 to speak to them about the ideas put forward in the letter.

Committee Comment

The Committee requested that the letter be forwarded to the Chief Executive of the York Museums Trust (YMT) and YMT be asked to liaise with the Yorkshire Gardens Trust to investigate the viability of permanent displays and temporary exhibitions to honour York's horticultural, botanical and plant biotechnological achievements both past and present. The Committee suggested that both parties might like to explore further novel means of funding any permanent display by inviting donations as carbon-off setting.

11. The Committee agreed to formally appoint Sir Ron Cooke as a co-opted Member of the Committee for the duration of the review.

Information Gathered

12. During the course of this review, at both informal sessions and formal meetings Members gathered the evidence contained in the following paragraphs to enable them to inform their conclusions and recommendations. Issues arising from the information gathered and the Committee's analysis of the evidence received is detailed at paragraphs 55-88 of this report.

The Vision Document

13. The Vision document, dated January 2007, was prepared by Austin-Smith: Lord LLP and has been used extensively to explore the initial vision for a 'Cultural Quarter' in York for the area between the National Railway Museum (NRM) and the Minster. The Head of Arts & Culture at the City of York Council presented the 'Vision' document to Members at their formal meeting on 21st July 2008. Members were informed that the area between the National Railway Museum and the Minster had been chosen as it was an area which Sir Ron Cooke, former Vice Chancellor of the University of York, had noted as unique in Europe for containing buildings of all ages and in particular a large number of Grade 1 and 1* listed buildings. It proposed that the 'Cultural Quarter' would be a vibrant, clearly defined area that any customer would be aware that they had entered. The aim of the vision was to generate additional external funding than that which was currently achieved through an ad-hoc approach, to ensure that the whole quarter would benefit from investment.

14. The Vision document covers several study areas and the presentation given by the Head of Arts & Culture included information and proposals for each of these as detailed below:

NRM & South of the River Ouse

15. The area above was a surprisingly green space, however it was not easy to move around it. The walk from the NRM to the Minster took approximately 9 minutes and it was felt that a clear connectivity between these two points was required. Reference was also made to redevelopment plans for the York Station and the possibility of opening up both sides of the building in the future.
16. At the moment coaches dropped visitors adjacent to the Memorial Gardens and there was no easy direct access to the river at this point. The city, generally, made poor use of the river frontage and work was required to improve this area.
17. Mention was also made that as part of the York North West development consideration had been given to a central plaza between the two halls of the NRM. A lighting strategy had also been proposed which would assist navigation around the proposed routes.

St Mary's Abbey Precinct Gardens

18. Proposals for these gardens included seeking to open up access to the Art Gallery and the Library from rear entrances in the Museum Gardens. Research with visitors to the city had indicated that Scarborough Bridge and 'Marble Arch' (the underpass in Leeman Road) were unsatisfactory routes and suggestions from the original consultants had included the provision of a new pedestrian/cycle bridge over the River Ouse from the NRM/Railway Station into the Museum Gardens. These proposals were intended to cover both daytime and evenings, and would involve reviewing the evening opening of the Gardens.
19. Reference was also made to the possibility of undertaking work on some of the trees in the Museum Gardens to lift their crowns in order to restore the view across the river to the Yorkshire Museum.

St Leonard's, Art Gallery & Exhibition Square

20. There were proposals to alter the traffic, which at present used St Leonard's Place. The first phase would involve reducing traffic to 1 lane in each direction and the second phase closing the road to all traffic except buses, cycles and taxis. In the timescales of this development traffic would be much reduced in this area. There were known air quality problems in this area due to the amount of queuing traffic and buses.
21. A private developer now owned St Leonard's Place and was considering a mixed use of hotel, retail and residential for the buildings. A new visitor information centre would be located on the corner of Blake Street.

22. It was proposed that the existing car park to the front of Kings Manor could be moved and replaced by a formal garden and Exhibition Square replaced by civic space.
23. Further proposals looked at linking the Theatre Royal and De Grey House, thereby improving the Theatre facilities.

The Library, St Leonard's Hospital & Multangular Tower

24. The railings around St Leonard's Hospital meant that there was restricted space for pedestrian traffic and bus queues. York Library was a magnificent building in an inappropriate setting and the area around it could be turned into civic space to improve the area. There were tentative plans to redevelop St Leonard's Hospital site as a new retail or workshop space.

The Minster

25. At present Duncombe Place at the Minster end was used as a taxi turning circle, improvements had been suggested but vehicular access still needed to be considered. There were plans for a plaza at the south entrance to the Minster and these were already progressing. There was a need to look at access to Dean's Park and the setting of the west end of the Minster.

The River Corridor

26. At the moment there were no seats on the south bank of the river between Lendal and Scarborough Bridges. There was a need for improvements to this area but any works on the river frontage would need to take into account flooding (i.e. the provision of seating that could easily be washed down).

Studies of other Local Authorities & their Experiences of Developing Cultural Areas

27. In order to inform their understanding of the best strategic approach for York Members agreed to find out more about how other local authorities had developed their Cultural Quarters/Areas. Members agreed a list of questions that could be used as a premise for their investigations and these are attached at Annex A to this report. A summary of the information gathered is set out in the paragraphs below.

Belfast

28. Celebrate Belfast was launched in October 2005 and was a 15 month programme of events and activities centred on the programme themes; 'City Hall Centenary', 'Festivals', 'Cultural Quarters' and 'Sporting Activities'. The aim of the Celebrate Belfast Programme was to help stimulate economic activity and contribute to the cultural life in Belfast through increased arts activity and a change in the perception of Belfast as a place to live and visit.

Belfast City Council commissioned an independent evaluation of the programme and a report entitled 'Belfast City Council Evaluation of Celebrate Belfast 2006 Final Report – Draft Version 2 – April 2007' was produced. This

outlined the key achievements, additional outcomes, legacy and future focus. This report can be accessed through Belfast City Council's website, the address of which appears in the background papers section of this report.

29. The drivers behind the projects had been the promotion of festivals and drawing attention to different areas of the city. It was also indicated from information in the report that it was imperative to have a robust business plan along with robust and certain funding.

Wolverhampton

30. Wolverhampton's 'Cultural Quarter' was located in an area that already held most of the city's existing cultural assets including the Art Gallery, Arena Theatre, Light House Media Centre and Grand Theatre. The area also had a number of vacant premises, which were suitable for conversion into cultural uses.
31. Wolverhampton had a vibrant nighttime economy based predominantly around bars and clubs, which appealed mainly to the 18-30 age group. A key objective for Wolverhampton had been to broaden the appeal of the facilities available to families and other age groups.
32. Consultation had taken place with residents and there was a Local Area and Neighbourhood Arrangements (LANA) Coordinator who liaised directly with city centre residents.
33. When asked if they would do anything differently should they have the chance to start again they responded that they would secure longer term funding.

Bolton

34. Bolton does not have a designated 'Cultural Quarter' but it does have a 5 year Tourism Development Plan. This sets out the vision for tourism in Bolton, which the local authority aims to achieve by working with, advising and influencing key strategic partners who impact on tourism.
35. Bolton promoted the fact that it was part of Greater Manchester with good transport links and good access to the countryside. Drivers behind the developments were economic.

Leicester

36. The 'Cultural Quarter' in Leicester was currently been developed as part of the regeneration of the St George's Area of the city and major cultural projects include a performing arts centre (due to open December 2008), a three-screen digital media centre (construction scheduled to be completed by July 2009) and a depot providing workspace for the city's designers, artists and other creative businesses.
37. Members that had recently visited Leicester had reported that the city had visually improved and now contained some interesting public realm works.

Doncaster

38. Plans for a 'Cultural and Civic Quarter' had originally been drawn up in the 1950s and had recently been resurrected as part of the town's urban renaissance master plan. The objectives behind it were to diversify the economy promoting cultural industries initiatives, creating a tourism interest, reducing reliance on the drinking culture, promoting better urban design with new housing, provision of new performance spaces, a new cinema, swimming pool and new local authority offices. Some of the funding would come from selling off existing council buildings to enable the provision of new public buildings. As developments were still at the planning stage, results of the proposals were not yet known.
39. When asked what they would do differently, should they have the opportunity to start again they responded that they would ensure that they had a better understanding of the competitive dialogue tendering process and would better define and inform earlier their specifications to the private sector.

Visit to Newcastle & Gateshead

40. Members of the Committee visited both Gateshead Council and Newcastle City Council on Tuesday 23rd September 2008. Officers and Elected Members at Gateshead Council gave the Committee a tour of the regeneration work that had been undertaken at Gateshead Quays including the BALTIC Centre for Contemporary Art, the Millennium Bridge and the Sage Gateshead. The tour of Newcastle included visits to the 'Heart of the City', Grainger Town, Waygood Galleries, Theatre Royal and Old Eldon Square.
41. During the above meeting Members were given a copy of the final report for the 'Review of Physical Regeneration – Impact of the Regeneration of Gateshead Quays and links to Gateshead Town Centre'. This report shows the findings of the Overview and Scrutiny Committee at Gateshead Council on the regeneration of Gateshead Quays and Town Centre including the impact that the physical regeneration has had on Gateshead, the vision for the future role of Gateshead Town Centre, Separation & Connectivity issues, Transport & Accessibility and Engaging & Connecting with Local Communities. The link to Gateshead Council's report is included in the background papers section of this report.
42. At the same meeting Members were presented with a brochure entitled 'Passionate About Gateshead Quays: The Transformation'. The brochure includes information on how the regeneration of the area was carried out, some best practice examples and some conclusions and advice on regeneration projects.

Visit to Stakeholders

43. On 15th October 2008 Members of the Committee visited and spoke to the major stakeholders about their proposed projects. They also walked around the area within the proposed boundary of the 'Cultural Quarter'. Representatives of the York Museums Trust, York Theatre Royal, York Library, Rushbond PLC (owners of St Leonard's Place), NRM and York Minster talked to Members

about their future plans. A summary of timings and costs for the stakeholders' future plans is attached at Annex B to this report. Further comments from the NRM and Rushbond PLC are attached at Annex C to this report.

44. Members also visited York St John University, which lies outside of the proposed 'Cultural Quarter' boundary. Discussions took place regarding the possibility of altering the boundary to include York St John. A summary of timings and costings for their future plans and some further information are attached to this report at Annexes D and E respectively.

Draft Business Plan

45. At a formal meeting on 29th October 2008 Members were presented with a draft business plan for consideration. The plan looked at the fact that while the cultural institutions within the proposed area were nationally and internationally renowned they were also characterised by under investment in the estate. All the institutions within the proposed 'Cultural Quarter' were in the process of embarking upon major redevelopments and it was important that these had reference to the overall context of the city centre and its connectivity with the York North West developments. The draft business plan is attached at Annex F to this report. Members requested that an Executive Summary be produced and this is attached at Annex G to this report.

Public Drop in Session

46. A public drop in/consultation session was held in York Minster on Tuesday 4th November 2008. Yorkshire Museums Trust (YMT), the Minster, Rushbond PLC, NRM, Theatre Royal and York St John University were at this event and chatted to members of the public about their future plans. The Head of Arts and Culture, Members of the Committee and the Scrutiny Officer were available to answer questions. An evaluation form was handed out to all those that attended and the results of these have been collated and are attached at Annex H to this report.

Evidence Received at the Formal meeting held on 16th December 2008

47. At Members request Officers from the City Strategy Directorate attended this meeting and provided details on how the proposed Cultural Quarter sat within the Local Development Framework (LDF) and with the City Centre Area Action Plan (CCAAP). They informed Members that extensive consultations had taken place regarding the CCAAP and 1700 comments had been received. A full report regarding this consultation was due to be presented to the LDF Working Group in January 2009.
48. Officers emphasised that for the Area Action Plan to include the 'Cultural Quarter' as an Action Area, it would be necessary for a robust evidence base to be produced for the 'Cultural Quarter', setting out the proposed projects, delivery partners and funding sources. For this to be incorporated into the next stage of the Area Action Plan and subject to public consultation, the evidence would need to be produced by summer 2009. Further information regarding the above and a summary of the comments received as part of the CCAAP consultation process is attached at Annex I to this report.

49. Members also considered a diagram, prepared by Sir Ron Cooke, which offered a model as to how both the cultural and economic development elements could be encompassed. This is attached at Annex J to this report.
50. Members also received information regarding transport and highways within the proposed 'Cultural Quarter' area. Officers said that a 'City Centre Transport Masterplan' workshop had been held on 15 July 2008. The Transport Planning Unit would be undertaking a review which would consider the findings of a number of projects including the Footstreets Review, Cycling City Strategy, Coach Parking Strategy, various improvements to main routes into the city and an audit of the 'Gateway Streets' to assess where road space could be reallocated to promote sustainable travel choices and improve the experience of visiting and navigating the city. The 'Cultural Quarter' (incorporating St Leonard's Place and Leeman Road) was one of the five areas that would be investigated for accessibility. It was expected that this review would be completed in the summer of 2009.

Informal meeting with National Express East Coast (NEXC) held on 13th January 2009

51. A main principle of the Cultural Quarter was to increase accessibility for foot traffic within the area and to that effect it had been presumed that access through the station would remain the same as it is now or be improved. It has, however, recently been announced that NEXC intend to 'gate' the station buildings as part of their franchise commitment. Members, therefore, felt it would be useful to meet with National Express to discuss their future plans for the station.
52. Members asked whether public access across the footbridge to the NRM would still be possible once gates had been installed. Representatives from NEXC confirmed that this route would be for ticket holding rail passengers only and would therefore, no longer be a public thoroughfare.
53. Discussions were also had regarding the idea of a new pedestrian river crossing. NEXC were keen to discuss the possibilities of this further whilst acknowledging that this was still very much in its early stages. The possibility of building a bridge from the end of platform 4 across the river was discussed as the land at this point was at the same level on both sides of the river. NEXC were keen to be involved in any further discussions regarding these ambitions, should they be progressed.

Evidence Received at the Formal meeting held on 29th January 2009

54. Officers from the City Strategy Directorate attended this meeting and provided information on access routes in and out of the York North West development area. The Committee were informed that, at this stage, it was not possible to give detailed information as a number of issues and options were still being considered. Consultants had been employed to look at access strategies and transport models and they were due to present their analysis in February 2009. Officers said that no decisions had been taken regarding Leeman Road but that whatever decisions were made would take into account the priority for existing residents to have access to their properties. Officers said that if

existing access routes continued to be used, these would be improved and enhanced. Lines of connectivity would also be maintained when new accesses were put into place.

Issues Arising & Analysis

55. After due consideration of all the evidence set out above it became apparent that some common themes occurred and, to this effect, this report seeks to consolidate the evidence gathered in paragraphs 12 to 54 of this report under sub-headings indicative of those themes.

Naming and Branding the Proposed 'Cultural Quarter'

56. Discussions were had regarding the term 'Cultural Quarter' and how it had become apparent during the course of the review that some residents saw the term as elitist and divisive. This had resulted in some negative comments being made about the proposals for the Cultural Quarter on the evaluation forms completed as part of the public consultation event. Members of the public had suggested various alternative names and these were listed within Annex H to this report.
57. Further discussions were had regarding the use of the term 'Cultural Quarter' and it was felt that there was a need to differentiate between the concept of the 'Cultural Quarter' and how it was referred to in general terms. In the context of this review it was being used as a term people were familiar with.
58. Further issues raised on this theme included:
- A 'Cultural Quarter' was not a re-branding exercise but the chance to regenerate an area and an opportunity for York to attract finance to support it
 - Members did recognise that there could be potential problems with branding part of the city as a 'Cultural Quarter'
 - The term 'Cultural Quarter' was nationally recognised by government departments and external organisations and could act as a positive trigger when attempting to access funding streams
 - The External Relations Manager from Visit York informed Members that the Visit York Board had discussed the use of the term 'Cultural Quarter' and not all Members of that Board had been happy with it. However they had recognised the importance and strength of the concept in order to attract funding.
 - It was suggested that 'Cultural Development Area' might be a more appropriate term to use than 'Cultural Quarter'.
 - It was noted that the term 'Quarter' was already used within the city as reflected by the recently launched 'Minster Quarter'.
 - As the proposals evolved it was likely that a more appropriate name would be adopted

The Proposed Boundary of the 'Cultural Quarter'

59. At the beginning of the review it was clarified that the boundary of the proposed 'Cultural Quarter' included York Railway Station.
60. Members saw many potential problems with developing a 'Cultural Quarter' and concerns were raised that York was not a large enough city to have designated areas e.g. a cultural area, a retail area, a business area. The Committee did not wish to exclude any part of the city or any particular institution or organisation and acknowledged that York, in its entirety, was a cultural city.
61. There was a need to define specific areas of the city for the purposes of economic development, whilst in terms of cultural provision; there was a need to be as inclusive as possible. The institutions and organisations based outside of the proposed boundary would be part of the wider cultural agenda and would contribute to activities and events within the 'Cultural Quarter' and benefit from its success. Following on from this the Committee believed it important to have a model that was inclusive and non-competitive and one in which all organisations were encouraged to offer cultural contributions. There must be benefits to citizens in all parts of the city as well as to visitors to the area. Sir Ron Cooke had produced such a model and is attached at Annex J to this report
62. It was, therefore, realised that there was a need to have some kind of boundary in order to attract investment to the area. Whilst the area was referred to as the 'Cultural Quarter' this was for the purposes of attracting funding only and not a reflection on how cultural the city was or on whether one area of the city was more cultural than any other.
63. Further issues discussed in terms of boundaries were as follows:
 - Whether the boundaries of the Cultural Quarter should be soft or rigid
 - Whether the present boundaries should be extended to include York St John University.
64. On analysing and considering all the information they had received on this theme the Committee decided not to recommend any changes to the boundary of the investment zone of the proposed 'Cultural Quarter' (including York Railway Station), for the short term, in order to maximise the chances of attracting funding to the area.

Funding

65. The information received throughout the course of the review led the Committee to determine that attracting funding was of the utmost importance to developing a successful and appealing 'Cultural Quarter' within the city. The Committee acknowledged that all the stakeholder institutions had major development plans afoot and funding for the public realm and for connectivity purposes would need to be requested in the proper context. It was, therefore, imperative to the success of the proposed 'Cultural Quarter', that all organisations involved, including City of York

Council (CYC), speak with one voice in order that appropriate funding streams can be sought for major investment in the public realm and civic space.

66. The following issues were also raised as part of the discussions on funding:
- There was a possibility that because York had a reasonably thriving and stable economy there may be problems in terms of attracting funding
 - Part of the York North West site was within the boundaries of the proposed 'Cultural Quarter' and could be a strong factor in attracting funding
 - How the various organisations would source their funding

Role of City of York Council (CYC)

67. The Committee believed that CYC should act as the key player in enabling the proposals for the 'Cultural Quarter' to be achieved. Most of the stakeholders within the area were independent to CYC and thus, the local authority would need to take a leadership role in terms of the provision of links between the different institutions and ensuring funding was sought for the benefit of the Cultural Quarter as a whole.
68. A draft business plan had been produced and work was still in progress to make this a robust and in depth document that could act as a feasibility study for the agreed 'Cultural Quarter' area. The plan, would ultimately, clarify in clear terms what role CYC should take in relation to the Cultural Quarter.
69. The production of a design master plan for the area was extremely important to allow strategic development of the public realm and civic space in the area between the NRM and the Minster, particularly in terms of seeking to agree an additional pedestrian bridge across the River Ouse as part of the York North West Plans.
70. The Committee noted that Richard Taylor from the NRM had been seconded as a consultant for a project to explore the future of the Archives within the city. His report was presented to the Executive Committee on 23rd December 2008. A link to this report and the minutes of the Executive meeting is included within the list of background papers at the end of this report. The Committee wished to see the Archives remain within the city centre and hoped that adequate funding could be found to allow this to happen.
71. Discussions were had regarding putting forward York for the European City of Culture status in order to capitalise on the boost that culture can give to a city's economy and social infrastructure. Officers said that due to the enlargement of the European Union it would be sometime before the UK would be eligible to apply for this status again. It was, however, noted that Andy Burnham MP, Secretary of State for Culture, Media and Sport, had suggested a new panel be formed to consider the feasibility of a British City of Culture prize to begin in 2011. To this effect, the Committee suggested

that the Head of Arts and Culture keep up to date with developments concerning this initiative with a view to putting York forward should it go ahead.

72. Further discussions raised the following points:

- The Council would need to provide encouragement as well as leadership
- The Council would need to support organisations seeking to access funding by removing barriers to investment
- The Council would need to ensure that Council owned buildings within the area, for example the library, contributed to the success of the Cultural Quarter.

Connectivity & Proposals for a New Pedestrian Bridge across the River Ouse

73. One of the key principles of the 2007 'Vision' document is to explore improving accessibility and connectivity within the area between the NRM and York Minster. In light of this, the Committee see the provision of a new pedestrian bridge across the river as a key factor in developing a successful 'Cultural Quarter'.

74. Other comments on this theme were:

- The importance of getting the transport hierarchy correct; with pedestrians at the top of that hierarchy
- The connections between all the areas of the proposed Cultural Quarter needed to be reinforced
- The idea for a pedestrianised Leeman Road and a bridge over the river are key to the re-invention of York in the 21st century as part of a city-centre wide offer that sweeps across from the Minster, through Exhibition Square to Museum Gardens, across the river and up through York North West.

St Leonard's Hospital Site & the Area Behind the City Art Gallery

75. At the moment the St Leonard's Hospital site and the area behind the City Art Gallery were under-utilised. The area behind the Art Gallery was not used at all and comprised quite a large area that had Nissan Huts on it. Thought would need to be given to what would happen to this area.

76. Discussions with Rushbond PLC led the Committee to the conclusion that the route from the back of St Leonard's Place to the St Leonard's Hospital site may be more frequently used once Rushbond PLC implemented their plans for the buildings on St Leonard's Place. Once these buildings were occupied then this route might be used as a short cut to other parts of the city. It was also acknowledged that at present the buildings on St Leonard's Place were only occupied during working hours. In the future they may be occupied for longer periods of time thus providing some lighting for this area, and making it feel safer to use.

77. Further comments were as follows:

- The area between the library and St Leonard's Hospital could be used as a sculpture park or an information centre
- The public were often deterred from visiting them because of problems with anti-social behaviour.
- Further consideration needed to be given as to ways of preserving the history of this area for future generations whilst encouraging visitors to benefit from what it had to offer

Traffic, Highways and the City Centre Area Action Plan (CCAAP)

78. The key issue for the Area Action Plan in relation to the 'Cultural Quarter' was the need to co-ordinate the public realm master planning of the wider city centre with the proposals for the public realm within the boundaries of the 'Cultural Quarter.' It was noted that the information Officers had provided on their CCAAP consultation results largely mirrored those which were collated from comments received at the public drop in session held on 4th November 2008.

79. It would be necessary for a robust evidence base to be produced for the Cultural Quarter in order that it could be included as an Action Area. This would need to set out the proposed projects, delivery partners and funding sources. If this were to be incorporated into the next stage of the CCAAP and subject to public consultation then the evidence would need to be produced by summer 2009.

80. It was important to embed the objectives for the Cultural Quarter into both the CCAAP and the York Northwest Area Action Plan. This would ensure that any proposals were co-ordinated with the wider area.

81. Other factors related to this theme are as follows:

- Although the boundary of the 'Cultural Quarter' could cover an area of more than on Area Action Plan, the government office has advised that Action Plan boundaries could not themselves overlap.
- There were air Quality issues in Museum Street and Exhibition Square from queuing traffic and bus manoeuvres
- Accessibility was a key factor in the success of the 'Cultural Quarter'.

Public Drop In Session

82. The Committee took into consideration all the comments made at this event and these have been collated and are attached at Annex H to this report.

83. It was clear from the evaluation forms received that there were mixed feelings about designating part of the city as a 'Cultural Quarter' and many felt that the boundaries should be broader and not exist at all.

84. The majority of responses indicated opposition to the name 'Cultural Quarter' and various alternatives were suggested.

85. Members of the public generally indicated that they did not want to see large, commercial organisations within the 'Cultural Quarter' but would prefer to see independent organisations alongside performance related events, increased public realm investment, cafes, museums, galleries and creative activities. Late night, noisy activities, large shops and expensive restaurants were some of the things that people suggested would be inappropriate for the area.
86. There was general support for the creation of jobs in the area, with a leaning toward those in the creative industries and the hospitality and tourism trades.
87. Most people who took part in the survey already visited the area at least once every 4 weeks and most said they would visit in both summer and winter and during the day and evening should there be something to do.
88. A large number of people were positive about a new pedestrian river crossing but some felt that improvements to Scarborough Bridge and Marble Arch would be adequate.

General/Other

89. The following issues were raised in general discussion about the evidence gathered during the course of this review:
 - It was important to make the most of York's stunning buildings
 - There was a need to be sensitive to other strong cultural offers outside the proposed Cultural Quarter i.e. Castle Museum, Micklegate, Gillygate, Clifford's Tower, Walmgate
 - There were many events in York that did not get publicised
 - Those involved in the creative industries in York should be involved in the planning process and execution of ideas rather than bringing in people from outside. Examples of this would be the use of the specialist creative industries such as stonemasons and glaziers
 - Did the recent launch of the 'Minster Quarter' affect the proposals for the Cultural Quarter?
 - Was York's challenge one of regeneration or preservation of its existing heritage?
 - There was a need to encourage visitors to return to the city and stay longer
 - It was important to get the correct balance between residents and visitors visiting the 'Cultural Quarter'
 - Ways of sustaining the evening economy around the NRM area would need to be explored
 - If the proposals went ahead the evening culture in York may shift
 - It was important to source trees, cycle racks, seats etc suitable to the area and the design master plan should take this into consideration
 - Currently, there was relatively poor use of the river frontage and the south bank of the river was severely under-utilised
 - Any works on the river frontage should take account of flooding e.g. easily washed down seating
 - There was a need to tackle the problem with geese along the river corridor

Analysis of the Studies of other Cultural Quarters/Areas Including Members visit to Newcastle & Gateshead

90. The Committee made the following points regarding the above theme:

- Most of the cities investigated had been hit by economic decline and the creation of a 'Cultural Quarter' had, in most cases, been part of a greater regeneration project
- It was too early to draw conclusions from most of the cities investigated, as their 'Cultural Quarters' had not been in existence for long enough.
- The drivers for both Gateshead Council and Newcastle City Council were very different from those in York.
- The main aim in Gateshead was felt to be regeneration of the riverside to form Gateshead Quays and apart from the York North West Site there was little regeneration land within the proposed boundaries of the 'Cultural Quarter' in York
- Gateshead Council felt it was important to have a solid plan before applying and sourcing funding
- Gateshead now has one new iconic building (Sage Gateshead) and another iconic building in the conversion of an old flour mill into the BALTIC Centre for Contemporary Art. York already has several iconic buildings
- Neither Council called their areas 'Cultural Quarters'. Members visited areas named Gateshead Quays and Grainger Town
- Both Gateshead and Newcastle were part of a coherent plan of development and were not a re-branding exercise
- Both were Arts and Culture led regeneration and the substantial public investment had drawn in substantial private investment
- Newcastle City Council wished to enhance heritage features to introduce buffers between nighttime drinking areas of the city
- Some of the drivers were similar to York's and some were different:

Similar

- Building a nighttime economy not based on drinking
- To improve connectivity, reducing the reliance on motor vehicles
- Opening cultural aspects of the Universities to the public

Different

- New sporting facilities for Gateshead
- New cultural icons: Angel of the North, BALTIC Centre for Contemporary Art, Sage Gateshead
- To improve Gateshead's town centre which was mainly owned by a private pensions trust.
- To increase city centre housing in Newcastle via 'Living over the Shop'
- To create a new business area in Gateshead

Corporate Strategy – Priorities & Direction

91. This review related to the following corporate priority for improvement of this Council:

‘Improve the actual and perceived condition and appearance of the City’s streets, housing estates and publicly accessible spaces.’

Options

92. Having considered the information contained within this report and associated annexes, Members may decide to:
- i. Amend and/or agree the contents of the report.
 - ii. Amend and/or agree the recommendations within this report.

Implications

93. **Financial** – Financial implications may arise for CYC if all the recommendations in this report were to be fully implemented. CYC would need to source funding (both internal & external) for major works to the public realm, the upkeep of the Archives and production of appropriate business and master plans. As there is currently no additional funding available, these financial implications would need to be addressed in more detail in future reports to Members should the Executive approve the recommendations arising from this scrutiny review.
94. **Legal** – There are no known legal implications associated with the recommendations within this report
95. **Human Resources** – The Head of Arts and Culture has led on this review within her service, it may have further impact on her service in terms of putting forward proposals for York to be a British City of Culture. It may also impact on the resources of the Economic Development Team within the City Strategy Directorate in terms of producing a comprehensive business plan and a design master plan. Any resource issues would need to be addressed in more detail should the Executive approve the recommendations arising from this scrutiny review.
96. There are no known Equalities, Property, Crime & Disorder, or other implications associated with the recommendations within this report.

Risk Management

97. In compliance with the Council’s risk management strategy, there are no known risks associated with the recommendations of this report.

Recommendations

98. In light of the above report Members are asked to agree the following recommendations:

The following recommendations should be seen within the context of York being a ‘Cultural City’ and its culture not being confined to any one area.

1. That City of York Council takes the lead in the comprehensive business plan and design masterplan for this area, especially in terms of implementing any changes to the public realm works, pedestrian links etc between the various investment areas.

REASON: To ensure that a robust business plan and design masterplan are in place.

2. That, with the backing of partner organisations*, the Chief Executive of City of York Council opens negotiations with Yorkshire Forward and other appropriate public bodies with regard to funding the proposed cultural master plan for the city and seeking major investment for realising the opportunities available for improvements to the public realm and civic spaces.

*Yorkshire Museums Trust, Rushbond PLC, York Theatre Royal, York Minster, National Railway Museum, Kings Manor (University of York), Visit York, York @ Large and appropriate departments within the local authority.

REASON: To source appropriate funding streams.

3. In view of the fact that development of the York North West site will create more traffic both vehicular and pedestrian:
 - i. The Committee recommends that substantial improvements be made to the area known as 'Marble Arch' (both road and pedestrian tunnels).
 - ii. The Committee recommends that City of York Council should seek to agree a new pedestrian/cycle river crossing (linking the National Railway Museum and Museum Gardens) as part of the York North West development plans.

REASON: To ensure that access and egress from the York North West site is appropriate and the area around the NRM receives better connectivity to the rest of the city.

4. That the Head of Arts & Culture prepares the relevant documentation to propose York as a British City of Culture, should this proposed government initiative go ahead.

REASON: To promote the city as an outstanding centre of culture.

5. That a wider strategy for 'Cultural Development Areas' within the city as a whole, be pursued by York @ Large to engage other cultural attractions and leisure providers e.g. a Castle Area.

REASON: To ensure cultural inclusivity across the city.

6. That the boundary of the proposed 'Cultural Quarter' be used for investment purposes only. That a fixed boundary is not the most

appropriate for a 'Cultural Quarter' in the long term and the position of a permeable boundary should, therefore, be revisited by York @ Large at a future date.

REASON: To find the most beneficial way of defining the area.

7. That York @ Large be requested to revisit the name 'Cultural Quarter' as part of the work on the comprehensive business plan and the group should consider either a geographical or historical name for the area.

REASON: To reflect the views of the Committee and of comments made by local residents.

8. That the recommendations of the report commissioned by City of York Council to look at the future of York City Archives be fully implemented to ensure that the Archives are suitably funded and are presented as a key part of the 'Cultural Quarter' area.

REASON: To ensure the future of the Archives within the city.

Contact Details

Author:

Tracy Wallis
Scrutiny Officer
Scrutiny Services
01904 551714

Chief Officer Responsible for the report:

Quentin Baker
Head of Civic, Democratic & Legal Services
01904 551004

**Final Draft Report
Approved** ✓

Date 10.02.2009

Specialist Implications Officers

Finance

Patrick Looker
Finance Manager
EXT: 1633

Richard Hartle
Head of Finance
Learning, Culture & Children's Services
Ext: 4225

Wards Affected: Guildhall, Holgate & Micklegate

For further information please contact the author of the report

Background Papers:

- Belfast City Council Evaluation of Celebrate Belfast 2006 Final Report – Draft Version 2 – April 2007' – This report, along with an Executive Summary can be found at:

www.belfastcity.gov.uk/events/docs/celebratebelfastreport.doc

- 'Review of Physical Regeneration – Impact of the Regeneration of Gateshead Quays and links to Gateshead Town Centre'. This report can be found at:

<http://online.gateshead.gov.uk/docushare/dsweb/View/Collection-2296>

- 'Passionate About Gateshead Quays: The Transformation'. [A copy of this document is available for viewing from Scrutiny Services, Guildhall, York, YO1 9QN].
- Notes from the 'City Centre Transport Masterplan' workshop held on 15 July 2008
- 'Cultural Quarters: Principles & Practices' - Simon Roodhouse (2006)
- The Future of the City Archives – reports & relevant minutes can be found at:

<http://democracy.york.gov.uk/ieListDocuments.asp?CId=102&MId=3582&Ver=4>

Annexes

Annex A	Questions used as a premise for investigating other cultural areas.
Annex B	Timings and costings for stakeholders' future plans
Annex C	Further information from the NRM and Rushbond PLC
Annex D	Timings and costings for York St. John University
Annex E	Further information from York St. John University
Annex F	Draft Business Plan
Annex G	Executive Summary of Draft Business Plan
Annex H	Public Drop in Session Results
Annex I	LDF & CCAAP Information
Annex J	Sir Ron Cooke's Suggested Model

Cultural Quarter Questions

How did you decide which area to designate as a cultural quarter?

What were your objectives in establishing a cultural quarter?

Has designating the areas a Cultural Quarter had any effect on those cultural institutions outside the designated area?

Which partners are involved in developing the area?

How did you engage local residents in the process of establishing a cultural quarter?

What have been the successes of the cultural quarter initiatives?

What are the key factors in gaining that success?

Have your visitor numbers increased as a result of establishing a cultural quarter? If yes - by how many over what length of time?

What have been the problems of the cultural quarter initiative?

How were these issues overcome?

If you were to start it again today what would you do differently?

This page is intentionally left blank

York Cultural Quarter				
Development Plans	2008	2009	2010	2011
York Minster	Completion of the Development stage of the Minster Master Programme. Construction of the masons' lodge.	Conservation of stone and glass in East Front together with work on the quires and clerestories. Construction of the Chapter House Yard temporary buildings. Development of interpretation scheme - manf 3D stations and AV programmes	Conservation of stone and glass in East Front together with work on the quires and clerestories. Development of the undercroft and South Transept Approach improvements. Improvements to the Chapter House Yard buildings. Interpretation development and installation within the Minster.	Conservation of stone and glass in East Front together with work on the quires and clerestories.
York Theatre Royal	Discussions with key partners, initial discussions with lead funders. Public consultation commissioned.	Appointment of Design Team, Public Consultation on design proposals. Detailed design proposals and planning applications. Submission of detailed funding applications.	Site work begin.	Handover of finished development, testing and full public launch
York Art Gallery	Development of the capital scheme to enhance facilities at the Gallery with a range of funders including Arts Council England together with applications for funding.		Secure funding for the capital scheme	
The King's Manor	No significant developments planned over the immediate or medium-term at the King's Manor.			

Development Plans	2008	2009	2010	2011
1-9 St Leonard's Place (Rushbond plc)		All timescales are indicative. Submission of plans to seek Planning Permission. Mixed use development to include luxury hotel, restaurants, retail, office and residential (town house and apartment) uses.		
St Mary's Abbey Precinct	Improved facilities at the Hospitium 2007-2008. Complete and open	Yorkshire Museum closes for refurbishment - the objective is realise its full potential in showing the Museum's collections of scientific specimens and archaeological artefacts in ways to challenge, excite and inspire.	Yorkshire Museum re-opens with four new galleries covering Roman, Medieval and prehistoric York together with an audio-visual history of the city.	The Museum Gardens capital project begins - to create a botanical garden which offers opportunities for learning, enjoyment and involvement for people in a safe and beautiful space in the heart of the city.
York Central Library	(Indicative) Development of Plans and discussions with key stakeholders.	(Indicative) Finalising of plans, consultation and planning applications. Transformations of the ground floor and creation of learning rooms.	Further building work dependent on funding.	

Development Plans	2008	2009	2010	2011
<p>National Railway Museum</p>	<p>Phase 1, 2008-2012: Change perceptions of the NRM and develop, brand image, move into new audience markets, complete Phase 1 of the rebuild on site to create a dynamic new visitor experience with the Great Hall of the Museum. Preparing to welcome 1 million visitors to the NRM from 2012, remodelling the Great Hall and creating new hands on exhibitions keyed to provide learning opportunities for local students to become a key learning resource for all schools in the region, change people's perception of the Museum and develop a brand that articulates the Museum's ambitions, grow the proportion of visitors to York whose prime reason to visit the city is to come to the NRM, be a place of pride and instil a sense of ambition in York for local residents, position the Museum in readiness to progress to Phase 2 and 3 aligned to York North West and York's Cultural Gateway.</p>			

York Cultural Quarter				
Development Plans	2012	2013	2014	2015
York Minster	Conservation of stone and glass in East Front together with work on the quires and clerestories.	Conservation of stone and glass in East Front together with work on the quires and clerestories.	Conservation of stone and glass in East Front together with work on the quires and clerestories.	Complete
York Theatre Royal	Complete	Complete	Complete	Complete
York Art Gallery	Expansion of the Art Gallery into the current City Archives space and create a new mezzanine gallery above the main gallery. A desire to create a rear entrance into the Gallery, linking into the Gardens - new pathways and a 'green route'	Capital project completes with improved facilities - exhibition space, café, shop, learning suite, storage, art library and toilets.	Complete	Complete
The King's Manor	No significant developments planned over the immediate or medium-term at the King's Manor			
1-9 St Leonard's Place (Rushbond plc)	St Leonard's Place development project starts.	St Leonard's Place development project completes		
St Mary's Abbey Precinct	York Art Gallery Capital Project begins	York Art Gallery Capital Project begins		
York Central Library	Further building work dependent on funding			

Development Plans	2012	2013	2014	2015
<p>National Railway Museum</p>	<p>Phase 2, 2012-2020: Dependent on the development of York North West. Creation of pedestrianised public realm with outdoor activities. A new Museum entrance within a Museum Plaza linked to the rear entrance of the railway station; development of high-quality eating and shopping experiences that become a destination in themselves.</p>		<p>Phase 3, 2012-2020: Dependent on the development of York North-West. Internal redevelopment of the visitor experience; a physical link via a new bridge over the East Coast Main line end the River Ouse to York's Cultural Gateway. New partnerships with hotel, conference and commercial exhibition space; develop high-quality eating and shopping experiences that become a destination in themselves.</p>	

York Cultural Quarter								
Resources	2008	2009	2010	2011	2012	2013	2014	2015
York Minster	Total development cost £1.4m	Total for implementation cost £17.5m - including East Front stonework £5.5m, Undercroft improvements £750k, Great East Window £1.75m, South Transept Approach £1m and Chapter House Yard works £650k						
York Theatre Royal	Improvements to existing theatre £1.2m	Link extension building £1.9m	Works to De Grey Rooms, professional fees, staff and other costs £1.9m	Complete	Complete	Complete	Complete	Complete
York Art Gallery		Significant costs - scaleable from £2m - £10m dependent on the size and features of the extension to the rear of the building. Ambitions lie at the upper end of this range however as this presents a rare opportunity to create a new, high - quality and unique public building for 21st Century York						
The King's Manor	No resources required as no developments planned for the building							
St Leonard's Place			Significant Investment - exact costings not available					
St Mary's Abbey Precinct; Hospitium; Yorkshire Museum and Gardens	Phase 1: Hospitium Development cost £450k. Complete	Phase II: Hospitium Development of the Yorkshire Museum £2m		Phase III: Development of the Museum Gardens £1m				

Resources	2008	2009	2010	2011	2012	2013	2014	2015
York Central Library	Initial development £100k, further funding will be required dependent on plans/ambitions for the building and service. External funding secured - but currently confidential.							
National Railway Museum		Overall cost of the project estimated to be £20m						

York Cultural Quarter								
Sources	2008	2009	2010	2011	2012	2013	2014	2015
York Minster	Heritage Lottery Fund, York Minster resources, City of York Council and private donations			Heritage Lottery Fund, York Minster resources, City of York Council and private donations				
York Theatre Royal	No information available at this stage							
York Art Gallery		Range of funders including Arts Council England			Range of funders including Arts Council England			
The King's Manor		None required						
St Leonard's Place			Private investment - undisclosed sources					
St Mary's Abbey Precinct; Hospitium; Yorkshire Museum and Gardens	Phase 1: Complete	Phase II: £1m has been secured to date. Other funding is being sought from Yorkshire Forward, Monument Trust and Renaissance in the Regions. Development of the Museum Gardens , £1m required in total.		Phase IV: Development of York Art Gallery £2m - £10m depending on scale. Funding from a number of funders including Arts Council England.				
York Central Library	£100k sourced initially, however, current budget constraints mean that development may be delayed until sources of funding can be secured.							

Sources	2008	2009	2010	2011	2012	2013	2014	2015
National Railway Museum		The NRM are fundraising from a mix of public & private sources toward £20m cost; including £7m bid to the HLF and discussions with Yorkshire Forward.						

York Cultural Quarter	
Overall Development (all dates are indicative)	
2008	Largely a development phase for the Cultural Quarter - with the Minster development stage of their programme complete, discussions underway within a number of stakeholders; York Theatre Royal, York Art Gallery and York Central Library. However, work has been completed on the Hospitium and the building is open, construction of the masons' lodge at the Minster is due to start and work begins to develop the range of facilities and exhibitions within existing buildings at the NRM.
2009	Over the next nine years, work will continue at York St John University (on the periphery of the Cultural Quarter as currently defined) to develop new space, adapt existing space and develop new courses and programmes to provide trained and educated people who will provide a key human element for the Cultural Quarter. At the Minster, while work continues to conserve the stonework and glass, temporary buildings are constructed in Chapter House Yard together with work beginning on the interpretative facilities. At York Theatre Royal, with a design team in place, consultation begins on proposals while planning and funding applications are drawn up. Similar work will be taking place across the road in St Leonard's Place as Rushbond plc make their plans for 1-9 St Leonard's known in detail. Work to finalise the designs for work at the Central Library take place together with consultation on proposals. The Yorkshire Museum closes for refurbishment while work continues on the first phase of developing exhibits and themes at the National Railway Museum.
2010	Work takes place at the Minster to improve access to both the South Transept and the Undercroft while the Chapter House Yard buildings are completed together with that of interpretative work inside the cathedral. Funding is expected to be secured for developments of the capital scheme at York Art Gallery while on the opposite side of the road at 1-9 St Leonard's Place developments should be settled and planning permission obtained for work to begin in 2012. The Yorkshire Museum reopens with four new galleries on York's history and way of life.
2011	Work continues at the Minster in conserving glass and stonework on the East Front as well as surrounding quire areas. Work is expected to be completed at the Theatre Royal together with testing and launch. York Art Gallery is expected to secure funding for their capital scheme and the development work on the Museum Gardens begins to restore the botanical gardens, secure volunteer and community participation, open up old vistas and new green routes.

Overall Development (all dates are indicative)	
2012	Work begins at York Art Gallery to expand into the City Archives space and to create new galleries both there and above the existing main gallery. Developments begin too, at the rear of the building to create a new entrance, improve public space and access together with facilities like additional space and a cafe. The work at 1-9 St Leonard's Place begins to create a key, mixed use building at the heart of the Quarter - with a boutique hotel, restaurants, retail and residential space. Work on Phase 2 of the NRM development work begins, the creation of a new pedestrianised public realm, new Museum entrance and the development of eating and shopping destinations set within a new plaza.
2013	While work continues on stone and glass conservation at the Minster, the work on York Art Gallery completes to improve facilities within the building; more galleries and exhibition space, a new café, shop, learning suite and art library. Work continues at 1-9 St Leonard's Place to develop a key, mixed-use building at the heart of the Cultural Quarter.
2014	Work begins to near completion on the East Front of the Minster while work is complete at York Theatre Royal and York Art Gallery. 1-9 St Leonard's Place development completes - providing a boutique hotel, retailing, restaurants and residential space (both apartments and town houses) - giving a major new facility at the heart of the Cultural Quarter. Phase 3 of work at the NRM, dependent on the development of York North West, begins. This work will link both the NRM and York North West with the heart of the city via a new pedestrian bridge, create new partnerships with hotel, conference and exhibition spaces and place the NRM and neighbouring restaurants and shops on the map as a destination in their own right.
2015	The Cultural Quarter is now largely complete in physical terms: it presents an entirely new perspective for the resident and visitor alike - a cultural and historical space, centred around St Mary's Abbey Precinct and the Abbey, stretching from NRM in the west to the Minster and York St John University to the North East with key buildings and facilities facing into it and linked by paths and green routes. With greatly improved facilities for both residents and visitors alike to enjoy the rich variety of culture that York is able to offer in improved and dedicated surroundings.

York Cultural Quarter

York Minster

The Dean and Chapter see the planned improvements to access at the South Transept as improving the Minster's links and attachments to the city - essentially as a gateway linking the church to the urban landscape. Moreover they see the Minster as providing not merely an important attraction but having a pivotal role in the economy of York - providing jobs and the opportunity for the development of important skills in many areas of preservation, development, interpretation and culture.

There are a number of improvements to the access planned at the Minster as part of their new south entrance. The most obvious of these are the new set of steps with improved access for wheelchair users; in a vesica shape - steps encircled on two steps by a ramp in stone. The ticket desks will move out of the Minster's south transept into two shops in Minster Gates as the public approach the cathedral and the ticket will then be checked in the Minster itself. There will also be a box office facility available at the Minster too.

There will be a temporary entrance at the West end of the Minster during construction in 2009, seen as less efficient but essential if works are to progress to schedule. Part of this work will be to improve disabled access to the undercroft - the area below the central crossing created by the programme to stabilise the central tower in the late 1960s and providing public access to the treasury, and the foundations of the present building and the earlier cathedral too.

The present programme of work to restore the glass and stone of the east window is progressing and while the glass is out for repair a colour representation printed by Hewlett Packard will be hung in its place. While the window is being worked upon by the Glazier's Trust there will be an opportunity to see the glazier's at work in Bedern via live screens in the Minster. A similar facility will explain the role of the masons and stonecarvers who work in the Minster Stoneyard in preserving the 800 year old cathedral.

The detail of the Minster's development programme is contained in a six volume bid to the Heritage Lottery Fund which centres on the themes of tourism enhancement through improved communication and interpretation and improved access to the building; particularly for those with a mobility disability.

York Cultural Quarter**The King's Manor**

The King's Manor has a large and growing archaeological department and a medieval studies department - thus there is a footfall of some 400-500 students, academic and other staff in the building. There is no major expenditure or change of occupancy planned at King's Manor in the immediate or medium-term future (i.e. to 2015) so therefore no significant costs over and above maintenance and some internal changes of use.

There is sympathy from the King's Manor users for a throughway that is tempered by anxieties on the part of their security department about safety of users and property; petty theft is a significant problem as is small scale vandalism and occasionally other crimes. While security is an issue - e.g. the lane between King's Manor and the 1-9 St Leonard's Placebuilding - this is an important opportunity for a more visible through route to the Museum Gardens and the city centre and the idea of a mutual security operation with all interested parties (City of York Council, York Museums' Trust, Theatre Royal and Rushbond plc) about the security implications of opening up routes in the St Mary's Abbey Precinct is being discussed. There is a need to balance security with the long standing desire for through routes and with an assumption that satisfactory solutions can be found to secure them.

York Cultural Quarter**York Museum's Trust - York Art Gallery**

The overall objective which York Museums' Trust has set for the Art Gallery is to realise the potential of unused spaces in the building and improve access to the collection of designated fine and decorative art collections that are currently not on public display. The plan is to open more of it to view, involvement and enjoyment and physically connect the Gallery with the Abbey Precinct.

The project is to expand the Art Gallery into the space currently occupied by the City Archives, provide space for new galleries and particularly create a new mezzanine gallery above the existing main gallery. At the rear of the building there is a desire to extend the Gallery into the gardens and create a new entrance, provide a new entrance to the Precinct, linking with new pathways and a 'green' route. The extended space will provide accommodation for more displays and exhibitions including a contemporary programme as well as an improved cafe, shop, learning suite, storage, art library and toilets.

York Art Gallery, with a new rear entrance, will therefore become an integral part of the St Mary's Abbey Precinct with Exhibition Square being developed as an event space for the city.

In terms of timescale, the Museums' Trust will seek funding to develop the plan for York Art Gallery from a range of possible funders including Arts Council England in 2008-09 and secure funding from 2010. Arts Council England, for example, is committed to increasing funding to the visual arts across the country. The plan is to start the capital project in 2012 and complete in 2013.

York Cultural Quarter

York Theatre Royal

York Theatre Royal is working with York Conservation Trust on extensive plans for the development and expansion not only of its existing premises, but also into de Grey House and the de Grey Rooms - while they are already using the building to some extent, more space will become available when the relocation of the Visitor Information Centre (VIC) takes place in 2009.

It is proposed that there should be a connecting building between the theatre and de Grey House which will need to pay due respect to the importance of the existing theatre foyer. To make this connection possible, discussions are underway with NEDL to explore some of the difficulties presented by the electricity substation in the basement of de Grey House and the proposed relocation and upgrade.

York Theatre Royal has continuously evolved in response to the changing needs of audiences and the community with developments in recent years focussing increasingly on children, families and young people. Within the last 8 years the Theatre Royal has developed a new studio space to accommodate youth and community productions, created a vibrant youth theatre group for young people from 5 to 25, introduced a programme of theatre productions aimed specifically at children, and have initiated an extensive partnership with schools to support creative learning across all areas of the curriculum.

A good example of the Theatre working in collaboration with York's many cultural attractions and communities was the highly acclaimed production of the Railway Children, staged at the National Railway Museum which played to over 20,000 people in the Summer of 2008.

In addition to a striking new link building providing a single entrance to the theatre complex, the development will refurbish the de Grey Rooms (currently inaccessible to the public), creating new flexible rehearsal and performance space. This will provide facilities for better programme of activity with schools, enlarge the foyer to bring significant improvements for audiences front of house and allow the cafe bar area to move forward and providing the possible opportunity to glaze in the colonnade and move out on to the pavement should changes to the current level of vehicle traffic use take place.

York Cultural Quarter**Rushbond plc: 1-9 St. Leonard's Place**

Rushbond plc acquired 1-9 St Leonard's Place and 2/4 Museum Street from the City of York Council, who continue to occupy the premises pending relocation.

Architects have been instructed to produce an initial scheme design. The scheme concept involves the reconfiguration and re-use of the existing buildings, the clearance of the low quality extension buildings and the development of a new building alongside. The new building element would offer an opportunity for an exciting new contemporary form of architecture to complement the refurbished historic buildings.

A mixed use development is envisaged to include a high quality luxury hotel together with restaurant, retail and office space as well as residential (town houses and apartments) uses with associated car parking. This would be significant development which would represent a major private sector led investment into the Cultural Quarter. It would add to the diversity of uses in this area and extend the hours of operation of the buildings into the evening times. A high quality luxury boutique style hotel would expand the range of hotel accommodation available within the City Walls. Additional restaurants would support and complement nearby attractions including the Art Gallery and Theatre Royal. There is an opportunity to provide space for retailers, particular seeking high quality and unique accommodation, as well as for office users, seeking a flagship office location. Residential uses can support the overall mix, add to the diversity of the total offer, and provide an appropriate use for this superb array of historic buildings.

A planning application is expected to be submitted in 2009/10 with redevelopment proposed for 2012 onwards.

York Cultural Quarter**York Central Library**

The ambition is to transform York Central Library into an Explore Centre in partnership with Adult and Community Education in line with the Library Strategy (as detailed in 21st Century Learning:21st Century Libraries). The plan is to provide 6 Explore Centres across the city - the first opened in Acomb in February 2008 and the second in New Earswick July 2008.

The Transformation is planned in 3 phases:

1. Creation of a suite of learning rooms and transforming the layout of the ground floor including a new café. The library are currently working with the conservation officer and an architect to create a plan for this - taking into account the listed nature of the building. The aim is to demonstrate how the change will increase visitors and issues. Adult and Community Education are planning a series of learning programmes which includes ESOL and Skills for Life. This phase will also include a project with an external funder (which will last for 3 years) - so there will be additional funding coming in. Details of this are currently confidential.
2. A report will go to the Executive by the end of the year with recommendations for the future of the City Archives. One possibility is for the a move into the library although this would be dependent on capital investment and possibly a bid to the Heritage Lottery Fund.
3. Major building work to increase space - possibly through the addition of another wing upstairs - and complete the transformation. This phase would need approx £3m to £5m.

York Cultural Quarter

York Museums' Trust: Museum Gardens, the Hospitium, St Mary's Abbey Precinct, York Art Gallery

At present the buildings in St Mary's Abbey Precinct are disconnected, standing in isolation from one another with little interpretation of the buildings, landscape, trees and plants. Physical access to the site is limited and impossible in part for people with mobility difficulties and visitor facilities are poor or non-existent. A large section of the land behind York Art Gallery is physically inaccessible. The connection with the river is restricted owing to heavy tree canopy growth and large parts of the gardens are underused.

Visitors are currently unable to appreciate the 2000 years of history that is represented in the Precinct, its importance to the history of the city nor the role that it plays in the history of the country. There are many themes that could be developed that are currently unrealised - the Roman period, the medieval abbey and its community, the history of York, plants and trees, garden design and architecture are some of the themes which can be explored and interpreted.

In a wider context, the Precinct sits at the very heart of the city, including the National Railway Museum, the King's Manor, St Leonard's Place and Exhibition Square leading through to Dean's Park and York Minster. Within the Precinct itself the Yorkshire Museum is ideally placed to interpret the city's history as well as that of the region and the country through the collections and the built environment around it. While on a map the area of the Precinct can be clearly defined, on the ground form does not follow function and the various cultural institutions are seen as remote from one another - the meaning of the landscape is hard to understand and while there are fine views to be glimpsed, there is currently no overall sense of meaning to the landscape.

The ambition for the Precinct is to improve the urban realm and establish its identity and connectivity. This has evolved and developed through discussions within the Steering Group which include York Museums' Trust, the University of York, St Olave's Church, City of York Council and English Heritage with the two main stakeholders being the University and the Council. The involvement and support of the University of York is especially important because the King's Manor is situated within the Abbey Precinct.

The development of St Mary's Abbey Precinct is planned to take place in four phases:

Phase 1 - The Hospitium

Phase 2 - Reinventing the Yorkshire Museum

Phase 3 - The Museum Gardens

Phase 4 - York Art Gallery

These will need to develop concurrently between 2007 and 2013

York Cultural Quarter

York Museums' Trust: Museum Gardens, the Hospitium, St Mary's Abbey Precinct, York Art Gallery continued...

The work to develop the Hospitium is already complete and is the centre for York Museums' Trust Conference and Corporate Business. The income it provides will help towards the economic sustainability of the Trust and future investment in the development of St Mary's Abbey Precinct. Development of the building included installing a lift and internal stairs to the first floor, soundproofing, toilets, kitchens and offices. The project was completed in April 2008 and on budget of £450k.

Phase 2: Work to refurbish the Yorkshire Museum is scheduled to take place between 2009 and 2010 and aims to realise the Museum's full potential from its collections of scientific specimens and archaeological artefacts in a manner which will challenge, excite and inspire with a special focus on the Roman and Medieval periods. The Museum was established in 1830 and attracts 180,000 local residents each year as well as 70,000 visitors to the city. The ambition is to attract 200,000 visitors from a range of audiences to explore new galleries covering the city's Roman, Medieval and Pre-historic periods and an audio-visual presentation on the History of York in the Tempest Anderson Hall.

The development of the Museum Gardens in Phase 3 will seek to create a botanical garden offering opportunities for learning, enjoyment and involvement in a safe and attractive space in the heart of the city. The project will develop the garden which will extend from the historic Museum Gardens through to land behind York Art Gallery providing new gardens and public spaces. New pathways and green spaces and routes will be created with the gardens enhanced with new planting and interpretation with views re-established. An events programme will involve local people through an active volunteers scheme while events in the gardens will engage new audiences. The volunteers programme will be established in 2008 and consult local people in order to develop ideas and aspirations for the garden. A gardens manager has already been appointed to lead the project. Resources will be sought in 2009-2010 and the capital project is scheduled to begin in 2011.

Phase 4 seeks to develop the Art Gallery (more detail under the separate Art Gallery section) in such a way as to realise the potential of unused spaces and the designated fine and decorative arts collections that are not currently on display within York Art Gallery. The objective is to open more up for public display, involvement and enjoyment and physically connect the Gallery with the Precinct. There are plans to expand the Gallery into the space currently occupied by the City Archives, creating a new mezzanine gallery above the existing main gallery. There are plans to extend the Gallery into the gardens, create a new rear entrance linked to pathways and a new green route. This extra space will provide more displays and exhibitions including an improved cafe, shop, learning suite, art library and toilets. Exhibition Square is to be developed as an event space.

Resources will be sought from the Arts Council England amongst others in 2008-9 and secured from 2010. The capital project is planned to start in 2012 and be completed in 2013.

York Cultural Quarter

National Railway Museum

The National Railway Museum (NRM) which is part of the National Museum of Science and Industry, is the busiest museum outside of London and a considerable asset to both the city and regional economies. It costs around £6m to run each year with around £750,000 of that raised from internal trading. It directly employs 200 staff and 200 volunteers and indirectly supports 750 jobs in the wider economy, contributing overall £35m into the York economy each year. The NRM has a new vision of being a world class museum where people from all walks of life will chose to explore how railways help shape our world and seeks to be the North of England's premier heritage attraction, a dynamic 21st century experience with top class public facilities and the centrepiece of a new city centre quarter in York. Currently 800,000 people visit the museum each year and the ambition is to develop this to a steady 1,000,000 from 2012.

The short/medium strategy (2008-12) which will set the scene for later, more dramatic, developments to the Museum and its environs, is to change public perceptions and brand image, move into new markets and complete Phase 1 of the redisplay on site, creating a dynamic new visitor experience within the Great Hall of the Museum which aligns the Museum to the aspirations of the York North West project and assists with the desire there to forge strong routes and connections with the rest of the city.

The Great Hall project will combine new and improved facilities for visitors with more engaging displays - enabling visitors to explore the impact railways have had in forming their lives. The ambition is to increase visitor numbers to over 1m in 2012 which will stabilise to around a million over the following four years with a greater proportion of visitors being from outside the region and who elect to stay overnight in the city. A key element in changing public perceptions of the NRM is to change the on-site cultural offer and begin to redevelop the brand by becoming a story-led museum offering a diverse programme with the multiple interpretations audiences are seeking. The Museum's website will be redeveloped and the possibility of an on-site temporary exhibition space capable of taking international quality exhibitions will be explored.

The long term strategy (2012-2020) is for the Museum to become a core part of a new cultural and leisure quarter in the city, within a pedestrianised public realm and with green spaces providing outdoor activities. There will be a new entrance to the Museum with shopping and eating facilities sited within a new Museum Plaza. With the construction of a new bridge over the River Ouse and the East Coast Mainline, the museum will become linked with the railway station in one direction and the centre of York in the other. The immediate site development will include other improved facilities too, a new hotel, expanded conference facilities and commercial exhibition space.

The cost of this project is about £20 and the NRM are actively fundraising from a mix of public and private sources, including a £7m bid to the Heritage Lottery Fund, which has been submitted, and ongoing discussions with Yorkshire Forward.

Further Comments from The National Railway Museum (NRM)

NRM is a very successful facility for York residents and visitors alike.

- The most visited museum outside of London, over 800,000 visitors per annum
- 50% of our visitors cite the NRM as their main reason for coming to York
- 200 staff, over 200 volunteers
- Puts £23 million per annum into local economy

Like all successful organisations we need to change to survive and our long term vision is to be a world class attraction for York, which encompasses a learning, leisure and business campus. To do this we must overcome the many shortcoming of our split site and poor quality public realm: areas, which are not in NRM's control

Elements of our vision include:

- A new visitor experience, (including a first phase redevelopment of the Great Hall for 2012)
- A new signature entrance building
- Public plaza
- High quality eating and shopping
- Links to the centre of York across the river
- Business development
- Hotel/ conference facilities
- Parkland Green spaces

We see ourselves as the western anchor of a new axis linking the Minster, Museum Gardens and Railway Museum across the railway and river – part of an extension of York's city centre made possible by York Central.

This long term vision is intimately connected to York Central development, which would deliver many elements of the plan, but has even more resonance in a city wide development of the Cultural Quarter and York's re-focus on its river environment.

York Central, through its comprehensive re-development incorporating a new approach to land traffic in the area, provides the opportunity to pedestrianise Leeman Road where it bi-sects the museum.

The ideas of a pedestrianised Leeman Road and a bridge over the river are key to the re-invention of York in the 21st century as part of a city-centre wide offer that sweeps across from the Minster, through Exhibition Square to Museum Gardens, across the river and up through York North West.

These elements have been enthusiastically received by other Cultural Quarter stakeholders, the York Central group and by Yorkshire Forward, but only York City Council can make these elements a reality through the planning and development process.

Two areas of discussion followed:

1. As with other elements of the Cultural Quarter, NRM's institutional vision can only contribute to an holistic re-development of York if all those elements of the public realm which currently lie with the City Council join them together.
2. The issues around the re-routing of traffic away from Leeman Road and the form of the public transport offer is something which Scrutiny group felt they need to apprise themselves of.

Note: it will be a requirement on the Developer appointed to develop the York central site to come up with a proposal that meets the requirements of York City Council.

Further Comments from Rushbond plc

Rushbond plc acquired 1-9 St Leonard's Place and 2 / 4 Museum Street from the City of York Council, who continue to occupy the premises pending relocation to new offices.

Rushbond have instructed architects to produce an initial masterplan / scheme concept design for the property. The scheme concept involves the reconfiguration and re-use of the existing buildings, the clearance of the low quality extension buildings and the development of a new building alongside. The new building element would offer an opportunity for an exciting new contemporary form of architecture to complement the refurbished historic buildings as well as enhancing the level of activity in the street to the rear of St Leonard's Place.

A mixed use development is envisaged to include a high quality luxury hotel together with restaurant, retail and office space as well as residential (town houses and apartments) uses with associated car parking. This would be a significant development which would represent a major private sector led investment into the Cultural Quarter. It would add to the diversity of uses in this area and extend the hours of operation of the buildings into the evening times. A high quality luxury boutique style hotel would expand the range of hotel accommodation available within the City Walls. Additional restaurants would support and complement nearby attractions including the Art Gallery and Theatre Royal. There is an opportunity to provide space for retailers, particular seeking high quality and unique accommodation, as well as for office users, seeking a flagship office location. Residential uses can support the overall mix, add to the diversity of the total offer, and provide an appropriate use for this superb array of historic buildings.

A planning application is expected to be submitted in 2009 / 2010 with redevelopment proposed for 2012 onwards. Extensive consultation on the proposals is planned prior to the submission of any planning application.

This page is intentionally left blank

On the Periphery of the Cultural Quarter as Currently Defined								
Development Plans	2008	2009	2010	2011	2012	2013	2014	2015
York St John University	Between 2000 and 2008 the University has invested between £60m - £70m in the Lord Mayor's Walk site of which some £47m has been directly or indirectly invested in Arts and Creative Media	Significant investment planned over a nine year period of which a major proportion will underpin investment in Arts/Creative Media - performance activities. This has been informed by a detailed Faculty of Arts development plan which includes the creation of Postgraduate space and Business incubation space. The Buildings will be; Wilmot Building (space adaptation and new build) - Digital Technologies; Design and Technology Building (space adaptation and refurbishment) - CPD - Local creative industries; Fountains Learning Centre - (Space adaptation and refurbishment) - Creation of a Mac Suite - dual platform fine art based media - still and video. Fine Art Building (space adaptation, refurbishment and new build) - creation of Mac Suite. Quad - (space adaptation and refurbishment) - music technology.						
Resources	2008	2009	2010	2011	2012	2013	2014	2015
York St John University	Total development cost £60m - £70m	Further development investment of between £7m and £10m with an active strategy to increase in partnership with external resource stakeholders.						
Sources	2008	2009	2010	2011	2012	2013	2014	2015
York St John University	University's own funds plus Hefce funding	University funds, Hefce funding with enhancement from RDA and regional/national based resource holders with a commitment to the professional development of arts, heritage, tourism, culture and technology. In addition the University Directorate for Institutional Advancement will also be engaged in raising funding through sponsorship initiatives and other forms of voluntary donations.						

On the Periphery of the Cultural Quarter as Currently Defined

York St John University

York St John University has invested between £60m and £70m between 2000-2008 in the Lord Mayor's Walk site of which nearly £47m has been directly or indirectly invested in Arts and Creative Media. Most of this has been sourced via the University's own funds or the Higher Education Funding Council for England (Hefce).

In terms of investment in the Arts and Creative Media between the period 2009-2015, the University anticipate:

1. Investing between £7m and £10m over this nine year period, the source of these funds being either self-generated or Hefce funding which will of course be subject to future Government policies and economic pressures. Investment will be supplemented through development funding via voluntary donations.
2. It is highly likely that a significant proportion of the £7m - £10m will underpin investment in Arts/Creative Media - Performance activities.
3. It is hoped that the YSJU anticipated figure will be enhanced as a consequence of RDA and Arts Council funding.
4. The Estate Strategy III 2008-2018 document has been informed by a very detailed, exciting and ambitious Faculty of Arts development plan which includes the creation of Postgraduate/Business incubation space.

Currently there are some 1,820 students in the Arts/Creative Faculty at the University and there are aspirations to introduce a number of courses - underpinned by the Faculty of Arts development plan which relate to the Cultural Quarter:

Creative Writing

Further Community Arts Courses

More Design Options - furniture, textiles, interior and multimedia

Growth in the number of dance places

More modern languages provision

Tourism management course

Cultural History course

Peace studies

There are associated developments in terms of new build, space adaptation or refurbishment of buildings over the period 2009-2018 to provide facilities for these courses as well as postgraduate and business incubation space. These buildings will be the Wilmot building (digital technologies), a Design and Technology Building, developments at the Fountains Learning Centre for creation of a Mac Suite amongst others - including space for the development of music technology facilities.

Further Comments from York St John University

Cultural Quarter Ad Hoc Scrutiny Committee Visit – York St John University, 15 October 2008.

The Dean of Arts and the Head of Regional Partnership Strategy, welcomed members of the City Council to York St John University to discuss the current exploration of developing a cultural quarter for the City of York. The following key points were noted:

- That the University had strategically placed itself over the past 6 years to respond actively and with great energy to the Creative Britain: New Talents for a New Economy agenda driven by the Department for Culture, Media and Sport.
- That the cultural assets of York St University as a city centre University – its physical estate developments particularly in the Arts faculty, its academic teaching and research staff and students and the presence of the Yorkshire Film Archive and the Theatre Royal archives and a £4.6 million educational arts centre focussing on national excellence in learning and teaching in collaborative creative practice, should be included as a key participating institution in the development of a cultural quarter for York.
- That the University commitment in all 4 Faculties to connecting cultures and communities in and across the City and region to engage in new learning opportunities to train and up-skill existing and future workforce in the City and region, makes the university an important catalyst for change, development and prosperity in the City and beyond.
- That the University's current partnerships with a range of cultural institutions in the City, region and internationally bring additional focus, opportunity and value to support the City to achieve its future ambitions by providing and sharing expertise in arts, heritage, tourism, culture, health and sport developments – product, event/festivals and business expertise – in collaboration with the newly established York St John Business School.
- That the University's SPACE (Sustainable Partnerships and Community Engagement) project to be located in the listed buildings at 56-58 Lord Mayor's Walk, in the new contemporary De Grey Court Complex, would be a major portal to develop, deliver and sustain a wide range of educational, culturally relevant and business focussed initiatives contributing to the future success of York's tourism, heritage, leisure and cultural industries.

Dean of Arts
York St John University

This page is intentionally left blank

Towards a CULTURAL QUARTER Business Plan (Draft Business Plan)

1 Introduction

1.1

The impetus towards a Cultural Quarter in York developed through a series of open workshops held by [York@Large](#) to consider the cultural partnership's strategic contribution to the Sustainable Community Strategy (SCS). It was clear that within the area between the National Railway Museum and York Minster, and anchored around the Museum Gardens, York possessed one of the most unique cultural landscapes in Europe. It contains grade 1 and grade 2* listed buildings from every major building epochs since Roman times and provides the green heart of the city centre. But it is an underutilised resource, poorly served by through navigation routes and making an insufficient contribution to the evening economy of the city. The area in question runs from the National Railway Museum and Railway Station end of the York North West development area, across the river Ouse, through Museum Gardens (incorporating the Yorkshire Museums, Kings Manor, the Library, St Mary's Abbey and the Hospitium and Observatory, into Exhibition Square (incorporating the York Art Gallery, Theatre Royal and St Leonard's Place) and running up to the Minster and its environs, including Deans Park.

1.2

While the cultural institutions this area encompasses are nationally and internationally renowned they are also characterised by underinvestment in the estate and all of them were in the process of embarking upon major redevelopments without reference to the overall context of the city centre and its connectivity with the York North West developments. It was clear that without a more in depth look at this particular area of the city that the City would be in danger of missing opportunities to connect, improve and expand on the individually held ambitions for the area. It was also clear that without some prioritisation of the competing demands that there was a very realistic possibility that each development would be approaching funders, investors and audiences without a clear sense of overall place and purpose and thus collaborative opportunities would be missed. To this end Austin Smith Lord, previously working with the Yorkshire Museums Trust on the Yorkshire Museum HLF bid, was asked to consider the vision for a cultural quarter for York and identify the areas where investment and direction could make the most impact.

The scrutiny panel has already had the report from Austin Smith Lord but in essence it acknowledged the complex cluster of activities that are embedded in this particular geographic space and identified 5 different focus areas that would require investments in the public realm to create that physical sense of place so inherent in a Cultural Quarter concept. What the report did not do was provide us with an overwhelming vision of what the reinvestment in this part of the city could do to retain the standards of a premier European visitor destination and provide the highest quality urban cultural landscape for the everyday enjoyment of the citizens of York. In short it did not paint a picture for us of how best this area could contribute to the vibrancy and sustainability of the city as a whole.

1.3

Our research has shown us that investment in the cultural economy of a city, quite often through the designation of a Cultural Quarter, can have a major positive impact on the economic, cultural and social sustainability of a city. It is important to acknowledge the current economic, cultural and social benefits that arise from York's distinctive cultural offer. This includes the city's theatres and cinemas, as well as some 50 attractions and museums and over 1000 listed buildings, as well as conservation areas, areas of archaeological significance, the city walls, parks, gardens and rivers - and a litany of events, festivals and more informal activities that take place within and between.

This cultural economy encompasses much of the city centre, with outstanding examples on both sides of the river, and inside and outside the Bar Walls. Indeed York's cultural offer covers areas like the Yorkshire Air Museum and the Yorkshire Museum of Farming, which are beyond the Outer Ring Road. This all adds to the richness and quality of the York cultural offer.

Nonetheless the area currently designated as the 'Cultural Quarter' does have some distinctive properties:

- It forms a compact area including York's two most visited visitor attractions (the NRM and the Minster) along with three other destinations that are among the city's most popular cultural services – The York Art Gallery, Yorkshire Museum and Theatre Royal.
- Within the city centre it provides the largest area of green open space covering the riverbank walks, Museum Gardens and Deans Park, and the proposed green area for the York Northwest site
- The area encompasses in a compact area an especially high number of Grade 1 and 2* listed buildings
- The area forms a clear opportunity to link the city centre with York Northwest, one of the key development areas in the whole of the region over the next few years. The Cultural Quarter forms a pivotal node in the relationship between this major 21st century development area and the traditional city centre.
- The St Leonard's Place / Exhibition Square axis has the potential for a large civic outdoor performance space and city centre private redevelopment.

Many of the businesses and organisations in the area are producing significant investment plans at the moment – some of which (York Minster Revealed and the National Railway Museums plans) are already in the public domain. Given the level of ambition and leadership which is being demonstrated by these organisations, there is value in working with them on initiatives that will improve connectivity and the public realm within the Cultural Quarter – in particular as placemaking exemplars that can be rolled out to the public realm elsewhere in the city.

1.4

The area is identified in the City Centre Area Action Plan Issues and Options Paper as an Opportunity Area, one of five that will help the city address key themes of economic vitality, the historic environment and community life.

The Issues and Options Report highlights the Cultural Quarter as a project that will:

- Provide a focus for enhancements to the public realm along a network of routeways through the Quarter
- Develop opportunities to open up the cultural attractions within this area so residents and visitors can “fully access and appreciate the quality of this area of rich cultural and historic heritage”

2 **Why do something? Strategic context** – a sense of ambition

2.1 York's Sustainable Community Strategy.

The recently published Sustainable Community Strategy “York – A City Making History 2008 - 2020” has high ambitions for York, which includes: -

- **Building confident, creative and inclusive communities**
- **Being a leading environmentally-friendly city**
- **Being at the forefront of innovation and change with a prosperous and thriving economy**
- **Being a world class centre for education and learning for all**
- **Celebrating our historic past whilst creating a successful and thriving future**

The Cultural Quarter offers opportunities to achieve this both through the direct investment of the organisations, attractions and companies based within its boundaries, and through appropriate treatment of the public open space, link routes and channels that run to and through the Quarter. The specific theme of “York – A City of Culture” includes such strategic aims as: -

- to be recognised internationally as a cultural city
- to be a city of high quality spaces
- to be a diverse, inclusive and cosmopolitan city
- to be an active and participative city and
- to be a creative city.

Again all of these ambitions can be met in the Cultural Quarter with every chance of rolling them out into the rest of the city. The city, therefore, has high ambitions that can be met in many different ways by investment in the Cultural Quarter.

2.2 Future York Group Report

This report by senior businessmen has been very influential in helping to guide the Thriving City agenda within the Sustainable Communities Strategy. One of the specific references to tourism is especially appropriate regarding the visitor economy.

“If York is to see its market position maintained, and we regard this as essential to the health of the economy overall, then innovation and investment to enhance the visitor offer is required. City of York Council should give priority to improving the quality of the public realm across the historic city, including paving, lighting, signage and public spaces. A higher quality of interpretation is necessary if visitors are to experience the full quality and range of the heritage offer”

2.3 York Northwest and City Centre Area Action Plans

The Cultural Quarter is identified as an “Opportunity Area” in the City Centre Action Plan Issues and Options Paper. These are areas of the city centre, which have been identified as having a specific need or good opportunities in the area for development, which will address the key themes of Economic Vitality, Historic Environment and Community Life.

The Quarter will address these themes:

- Economic vitality: growing the evening economy; improving York’s visitor experience and exceeding expectations; attracting overnight, higher value visitors; pedestrian and cycle routes into the city centre.
- Historic Environment: Managing the historic environment; designing in the city centre; improving pedestrian routes around the city centre; improving the appearance of public spaces; addresses green spaces and riversides; increasing opportunities for greening the city centre
- Community life: Community services and facilities, cultural activity, evening activity

2.4 Regional Tourism Strategy

The Regional Tourism Strategy is the Visitor Economy Strategy, which confirms that “Great places lie at the heart of the Regional Economic Strategy for Yorkshire and Humber” and the Strategy is keen to celebrate “exciting new opportunities both for the development of the visitor economy product and the promotion of our region in a more contemporary manner”.

The Strategy recommends that “local authorities and local businesses can help to support local identity by celebrating local history and events, using local food and drink, arts and crafts. All of these give the visitor a sense of place and lead to sustainability”.

Finally the Visitor Economy Strategy confirms that “Yorkshire Forward has clearly stated its intention to work towards modernising the regional image. This does not mean abandoning our heritage and tradition; it means representing this heritage to new audiences and in new ways”

The Cultural Quarter offers excellent scope for doing just that, through the individual proposals for the main players, and through appropriate investment in the public realm and infrastructure.

2.5 Visit York business plan

Visit York, the city's tourism organisation, has now produced its Vision for Tourism, and its Ambitions, and has presented them to the 'Cultural Quarter Ad Hoc Scrutiny Committee'. The Vision seeks to deliver long term, sustainable growth in tourism by building on York's distinctiveness, enhancing the quality of the visitor experience and promoting York as a world-class visitor destination.

These themes of distinctiveness, quality and world class fit well with the investment ambitions of the partner organisations operating within the currently defined area – proposals which are fully supported by Visit York. Furthermore a number of Visit York's specific ambitions for tourism – developing York's position as a leading European cultural city, combining a unique heritage with a modern outlook; enhance York's public realm; secure additional resources for sustainable investment in tourism etc – are also strongly reflected in the investment plans of the partner organisations and in the recommendations of this Committee. Visit York also welcomes the declaration that York is a 'Cultural City' and that its culture is not just confined to one area.

3 Benefits of the 'Cultural Quarter' concept for this specific area

3.1

Through the research so far undertaken with other Cultural Quarters visited or investigated we can recognise that there are other benefits to be gained by investment in this area:-

- Refreshing the image of York and building its cultural profile nationally and internationally
- Stimulating a pride of place
- Building new confidence in the whole of the cultural estate in the City
- Developing access to the landscape in the city through a new network of leisure routes and pathways
- Reclaiming our heritage landscape through improved interpretation and access
- Improving the urban environment through investment in high quality design elements within the public realm
- Contributing to a refreshed tourism offer
- Contributing to a reduction in health inequalities by encouraging walking and cycling within the city centre
- Encouraging inward investment
- Promoting York as a desirable place to live, work and visit.

3.2 Economic benefits

Excluding the city council jobs based at St Leonard's Place and De Grey House (which would move out as part of the development by Rushbonds of St Leonard's Place and the Conservation Trust at De Grey House) the key cultural institutions provide many of the jobs based in this area - the Theatre Royal, York Museums Trust, NRM, Kings Manor and York Minster/Minster Close. If you were to include the Campus at St John's University this would total some 1,500 jobs. So while respectable, this isn't currently a large employment node in the city. However, its contribution to the tourism is of major economic benefit:-

Value of tourism to York - £364mn and 10,600 jobs (2007-08 figures).

Visitor numbers at attractions in the Quarter 2007 figures:

843,311	NRM
779,825	York Minster
160,988	City Art Gallery
51,425	Yorkshire Museum

The City Walls (at least 1 mn users a year altogether – but most will go along the stretch within the Cultural Quarter).

In addition we also have

160,000	Theatre Royal customers
330,000	York Central Library

Users of all these services are a mix of tourists from outside the region and local residents. Improvements would also reap economic benefit from the one million people passing through the Quarter as rail passengers each year. There is clearly an opportunity, to open this area in the evening – especially riverfronts and Museum Gardens (lighting) creating a more 'family friendly' city centre atmosphere contributing more significantly to the evening economy of the city. The new (visitor) Information Centre on the corner of Museum Street and Blake Street could be charged as a gateway opportunity to the Quarter – and to the rest of the cultural highlights in the city.

If we are to consider including the York St John Campus within the Cultural Quarter then consideration must also be given to the substantial economic benefits from the investment already occurring and planned within that site (see addition to the appendices.)

The relationship of York Northwest (the swathe of land to the west of the traditional city centre which incorporates York Central (the site which includes the National Railway Museum and existing and former railway land), and the site of the former British Sugar works) is a crucial consideration if there is ever any intention of encouraging visitors to move between the city centre and the York Northwest site. Given that the great proportion of York's visitors are coming for the history/heritage experience and appreciate the compactness of York as a walking city, then physical linkage between York Northwest and the city centre is going to be an important issue. The Cultural Quarter's suggested

improvements in navigation routes offers a great opportunity to address this, linking together some of the strongest features of the city's cultural offers.

3.3 Cultural and social, health and well-being benefits

The area evidently has a very strong cultural offer – not just the famous attractions but also

- Explore at York Library
- City Archives
- Minster Archives
- Search Engine at NRM

Investment in these facilities will enable school groups and residents to find out more about their city's history, their own social history with a special strength on discovering aspects of personal genealogy. In looking at these establishments in an integrated way there is an opportunity to bring such a great social history offer closer to the local community.

A key feature of the landscape of the area is just how green the space is. By opening up these areas to greater access at different times of the day, by providing better routes through and around the areas, by encouraging better interpretation we will generate increased use by residents and visitors alike. We have already stated the wish that the pedestrian is at the top of the transport hierarchy throughout the area, with the cyclist, through preferential treatment on the roadways, a close second. All of this will support a more active populace.

4 What is needed to get the most from the establishment of a Cultural Quarter?

It is evident that the key cultural businesses in the Cultural Quarter have tremendous and exciting investment plans. They have provided detailed information on their plans to the Scrutiny Panel and this and additional information is included in the Appendices collated by CYC EDU. But we should also be taking into account the private enterprises, e.g. retail units, cafes, bars etc in High Petergate, hotels, Museum Street and in the newly formed Minster Quarter (northern end of the Cultural Quarter) when we agree on our recommendations.

City of York Council has a key role to play in the investment and revitalisation of the Library and City Archives, as well as with our "arms length" organisations, the York Museums Trust and the Theatre Royal. However much of the rest of the Cultural Quarter is also public realm:-

The River

Riverside footpaths

Other footpaths though out the area

The Memorial Gardens

Roads (e.g. St Leonard's Place, Museum Street, Leeman Road)

The City Walls

Exhibition Square

Duncombe Place

Street furniture – lighting, signs, litterbins, general services.

This would suggest that the production of a design masterplan for the public realm is of key importance moving forwards.

The public realm is important:

- i) in its own right – as a means of making the most of the Cultural Quarter’s individual projects by given them the right setting and connecting them
- ii) as a means of connecting these projects to the rest of the city
- iii) as a means of following on from activities already carried out in the city centre from 2003 onwards, such as Illuminating York (the York: Light masterplan for city centre lighting which included permanent architectural lighting schemes, and more recently a lighting-oriented festival programme at the end of October each year) and the York Renaissance Project (creative lighting and interpretation in churches and on the city walls)

Within the current LDF proposals and transport master planning for the city consideration has been given to pedestrianisation and traffic calming measures in St Leonard’s Place/ Exhibition Square. This would make a considerable contribution to the success of developing this area as part of a Cultural Quarter. We would also need to re-examine the narrow footpath in Museum Street and how this is addressed from Exhibition Square.

Linkage to York Northwest is essential, especially as, with the National Railway Museum being such a prominent feature of this development area, it is important to lock this firmly into the city centre visitor experience. But this also needs to be included as part of the redevelopment of Railway Station access and new entrance plans for the NRM and the through flow for the public both to and from the city centre. We will need to open up new ways of access to avoid the car if we are to achieve our aims of substantial increases in healthy walking and cycling. We also have to address the issue of Leeman Road access and improvements to Marble Arch. The York North West Development brief gives consideration to a bridge from the NRM into Museum Gardens as an alternative, safe way into the city and we should be promoting and supporting this.

Quote from Visit York re: the York North West AAP Issues and Options Paper:

“This is considered a major priority by the York Tourism Partnership, as this will make the most of links to the city centre, and will really integrate the cultural area around the NRM with the cultural area contained within the Museum Gardens (and beyond) – providing a safer and more imaginative link to the city than Marble Arch. Furthermore the link will benefit the whole of York Northwest – not just visitor elements – as it will help lock the new development with the rest of the city, rather than the risk of it being stand-alone and impermeable.

Consideration should be given to the opportunity of redeveloping Scarborough Bridge itself, thereby making closer, direct link with the railway station. Whilst work on the bridge itself might well be expensive (as per the listed disadvantage in the

Issues and Options Report) there are surely commercial opportunities as well in the vicinity of such a prominent location.”

Wherever such a link is provided, the opportunity should be considered to review lighting and pedestrian facilities on either side of the River Ouse between Scarborough Bridge and Lendal Bridge, enhancing opportunities for riverside activity in the daytime and in the evening.

We should also be making best use of the Museum Gardens – our green breathing space in the city centre. Currently Museums Gardens is a superb historical park but if we were to reinforce linkages across Museum Street, along the riverside walkways and through up to Exhibition Square and St Leonard’s Place it would open up the to the rest of the city.

This would suggest that seeking to agree a new river crossing as part of the York Northwest development plans will be key in realising the potential of this area.

Yorkshire Forward’s Major Events Strategy (draft) highlights the growing demand for cultural activities to take place in well facilitated, well resourced and pleasant outdoor public spaces. Despite the lack of good outdoor electricity supplies, convenient, pleasant public conveniences and a favourable traffic restriction regime significant numbers of outdoor events are currently held in the following places within the Cultural Quarter: -

- Museum Gardens (Illuminating York, Yorkshire Forward Enterprise Day, Mystery Plays, Shakespeare performances)
- Duncombe Place (Illuminating York, Military parades, cycle racing, Christmas lights switch on)
- Deans Park (Mystery Plays on Waggon, Shakespeare Project)
- River and river banks (Dragon boat races, Festival of the Rivers)

With an investment into good public facilities to improve this offer throughout the Cultural Quarter there may also be other possibilities: -

- In front of the NRM - requiring the long term plans to include closure of Leeman Road and improvements to Railway station access
- Exhibition Square – subject to St Leonard’s Place being closed to traffic and the removal of railings in the vicinity
- Along the walls – a linear event – possibly in the evening requiring improvements in lighting
- Library Square/ St Leonard’s Hospital -if no traffic/cars outside the Library and railings removed

This would suggest that funding should be sought for a major investment in the public realm of the city to realise the opportunities available in improving our public, civic space.

5 Funding

Within the appendices drawn up the Economic Development Unit each stakeholder has indicated.

- the activity at each individual stakeholder in the Quarter
- the financial cost of planned developments
- the potential or likely source of that finance
- an overall thumbnail view of the developing Quarter

In addition the individual sheets for each stakeholder gives textual information on their plans and notes some potential sources of funding to be explored for their particular development. Already identified within the documents are:

- Commercial sources
- Yorkshire Forward – various – not just Tourism and the Major Events Fund
- Arts Council – including funds for activities and events
- Private Trust Funds
- S106 agreements
- Local Transport Plan funding for some improvements
- Heritage Lottery Fund

An approach that has a greater strategic context and a phased development plan will, most likely, increase the stakeholders' chances of success. It could also seek to secure additional public funds that cannot be realised through the Council's current capital programme. There is still a substantial amount of feasibility work to be done to provide a clear and cast iron business plan for such an investment; however the Scrutiny Panel may wish to give consideration to just such a recommendation. This should be considered alongside the recommendations suggested in Section 4 above.

This would suggest the commissioning of an in depth Business Plan feasibility document for the agreed Cultural Quarter area.

October 2008

Gill Cooper
Head of Arts and Culture, CYC

Simon Daubeney
Business Analyst, Economic Development Unit, CYC

Ian Tempest
External Relations Manager, Visit York

CULTURAL QUARTER EXECUTIVE SUMMARY OF DRAFT BUSINESS PLAN

Where is the Cultural Quarter?

As it is currently proposed the Cultural Quarter runs from the National Railway Museum and Railway Station end of the York North West development area, the Memorial Gardens, the riverside walks, across the river Ouse, through Museum Gardens (incorporating the Yorkshire Museums, Kings Manor, the Library, the Roman Multangular Tower, St Mary's Abbey, St Leonard's Hospital, the Hospitium and Observatory), into Exhibition Square (incorporating the York Art Gallery, City Archives and the Theatre Royal) Duncombe Place, St Leonard's Place and running up to the Minster and its environs, including Deans Park.

The term 'Cultural Quarter' is borrowed from European urban planning terminology and is used to denote an urban zone distinguished by a number of related and located cultural institutions.

What are the distinctive features of the Cultural Quarter for York?

- It forms a coherent area including York's two most visited visitor attractions (the NRM and the Minster) along with four other destinations among the city's leading cultural destinations – York Art Gallery, Yorkshire Museum, City Library and Theatre Royal.
- Within the city centre it includes the largest area of green open space covering the riverbank walks, Memorial Gardens, Museum Gardens and Deans Park, and the proposed green area for the York Northwest site
- The area is a geographically a compact area which encompass a scheduled ancient monument site and an especially high number of Grade 1 and 2* listed buildings
- The area forms a clear opportunity to link the key development area of York Northwest with the city centre over the next few years. The Cultural Quarter creates a direct link to this major 21st century development area and the historic city centre.
- Exhibition Square axis has the potential for a large civic outdoor performance space
- St Leonard's Place - high quality city centre private retail, hotel and leisure redevelopment.
- That albeit compact, there is a perception that the cultural attractions are at some distance from each other and could be better connected

What are the opportunities?

Many of the businesses and organisations in the area are producing significant investment plans at the moment but without a co-ordinated approach they run the risk of being seen as competitive plans rather than collaborative. This is especially significant when it comes to funding applications. Given the level of ambition and leadership which is being demonstrated by these organisations, there is value in working with them on initiatives that will improve connectivity and the public realm within the Cultural Quarter – and from the Cultural Quarter to the rest of the city centre, and to the York Northwest development area behind the station. We would also aim to foster a hub of creativity and cross working of cultural production that will have benefits for the cultural life of the whole city and region.

The outcomes of collective level of investment by all the key stakeholders in this area of the will include:

- Refreshing the image of York and building its cultural profile nationally and internationally
- Stimulating a pride of place for workers, residents, businesses and visitors

- Building new confidence in the whole of the cultural offer for both residents and visitors in the City
- Developing access and connectivity to the green spaces and cultural institutions in the city through a new network of green leisure routes and pathways
- Improving our understanding of the history of the city through improved interpretation and access
- Improving the way that the city looks and feels through investment in high quality design elements within the public spaces and street environment
- Contributing to a refreshed tourism offer through investment in and upgrading of current cultural facilities
- Building a partnership between key stakeholders that will see collaborations and cross working on shows, events, exhibitions and education work
- Contributing to a reduction in health inequalities by encouraging walking and cycling within the city centre
- Encouraging inward investment in a phased and collaborative programme
- Provision of new retail, leisure facilities and hotel space in the city centre
- Promoting York as a desirable place to live work and visit.

Other benefits:

Cultural/social: social history/heritage (archive services are proposed to remain in this area), green space, improving routes to, from and through for pedestrians and cyclists. Enhanced learning about the city and its history through interpretation

Economic: jobs can be created through the various investments, especially the support of the city's evening economy and events opportunities

Tourism: opportunities to expand York's visitor offer (NB also the new Visitor Information Centre at Museum Street will be in a gateway location to the Cultural Quarter)

Educational: Both Universities have a city centre presence and partnerships that encourage creative cultural product and employment opportunities. Partnership working on developing learning outcomes for schools to contribute to cultural entitlement for all children.

Suggestions on how to get the most from the Cultural Quarter?

- Commission a Design Masterplan for the public realm (e.g. The River, Riverside footpaths, Other footpaths throughout the area, The Memorial Gardens, Roads (e.g. St Leonard's Place, Museum Street, Leeman Road), The City Walls, Exhibition Square, Duncombe Place, Street furniture – lighting, signs, litterbins, general services.
- Consider opportunities for a new pedestrian/ cycle crossing of the Ouse as part of the York Northwest development plans
- Specifically look at the open space, riverfronts etc as opportunities for events, festivals etc and link this work closely to the transport plans and city centre area action plans for the city
- Commission an in depth Business Feasibility Plan required for the agreed Cultural Quarter area.
- Coordinate all the individual plans and ambitions to create a Master plan for the area

ANNEX – THE PRINCIPAL PROPOSALS

This is a very short summary for the main proposed projects. Some of which (the Hospitium redevelopment, the Minster East front works) have already started, most of which depend on external funding bids to various bodies and council support for the suggestions above.

Development	Main features
York Minster	Improved access to South Transept – piazza – ticket operation relocated to shops in Minster Gates – improvements to disabled access (e.g. lift to Undercroft) – continuing restoration of stone/glass at East front window
Kings Manor	Discussions about the lane next to the Kings Manor being open more widely for access top/from Museum Gardens. Security implications are being explored
YMT – Art Gallery	Expand the art gallery – create a mezzanine gallery above the existing main gallery, extend gallery into the Gardens at the rear, Exhibition Square as event space
York Theatre Royal	Possible connecting building between the Theatre and De Grey House (where Theatre intend to do a lot more). De Grey Rooms will be refurbished, foyer to be enlarged, café bar area could be moved forward – even moved onto the pavement
Rushbond (1-9 St Leonard's Place)	Mixed use development envisaged, high quality luxury hotel, restaurant, retail and office space and residential
York Central Library	Will be transformed into an Explore Centre. Creation of a suite of learning rooms, new café, possible relocation of the Archives into the Library, possible additional wing upstairs
YMT – St Mary's Abbey Precinct	4 phases: <ul style="list-style-type: none"> • Hospitium (done) • Yorkshire Museum (major refurb – new galleries, and audio visual presentation on the History of York in the Tempest Anderson Hall) • Museum Gardens – gardens manager appointed – new planting, events programme, getting more volunteers, capital works on new pathways, routes and green spaces • Art gallery
National Railway Museum	First phase redevelopment of the Great Hall New signature entrance building Public plaza (NB pedestrianise Leeman Road) High quality eating and shopping Links to the centre of York across the river Business development Hotel/conference facilities Parkland/green spaces
St John's University	£Mns Investment in arts/creative media – Performance activities Postgrad/Business incubation space Development of many courses with a cultural/tourism slant (e.g. Tourism Management) Building works will include digital technologies a Design and technology Building etc
The new Visitor Information Centre	Redevelopment of corner of Blake Street as a gateway to the project

This page is intentionally left blank

Cultural Quarter Public Consultation - 4th November 2008

Responses from members of the public

Question 1 Have we got the boundaries for the Cultural Quarter Right? If not where should they be?			
	The boundary is fine as it is	16	
	There shouldn't be a boundary	12	
	The boundary is not wide enough	36	It should also include: - York St John University - 29, Gillygate - 4, City Screen - 5, Guildhall & St Helen's Square - 2, Stonegate - 2, Up to Bootham Park - 1, Mansion House - 1, The Grand Opera House - 2, Clifford's Tower - 2, Eye of York - 1, Castle Museum - 1, Area where the 'Festival of Angels' takes place - 1
	The boundary is too broad	6	Exclude the Minster - 2, Exclude NRM - 5, Exclude St John's University - 5, Leeman Road - 1
	The City Walls should be the boundary	3	
	How does one put a boundary of any sort on Culture?	3	
	Not entirely sure where the boundary is	2	
Other comments			
	The boundary is not correct and liaison with the Minster Quarter should take place		
	The boundary should cover a totally new area (a small scale arts area in its own right)		
	Historical buildings in York stand out in their own right and should not be included		
	The exact boundaries are less significant than the core elements included such as the institutions, open spaces, shops, offices and restaurants etc which combine in it.		
	The boundaries are acceptable if the primary aim is to make a pitch for money; however, there may be some danger in trying to compartmentalise parts of the city centre.		

Question 2 What would you NOT like to see in the Cultural Quarter?			
	More bars, pubs & restaurants	10	Amusement arcades
	Shops (large chain stores/high street shops/supermarkets)	13	Large hotels (new ones)
	Bad buskers	1	Graffiti
	Loud & oppressively noisy activities	3	Neglected gardens
	Traffic	7	Sport
	Fast food vendors/outlets/shops	9	A lack of planning
	Conservative art only	1	Elitism
	Over commercialism/A wholly commercial superficial venture	7	Car parking
	Themed street furniture	1	The York Wheel
	Modern structures not in keeping with York's existing historic architecture	3	Outdoor music except the occasional concert
	The pedestrianisation of Leeman Road	1	Luxury apartments
	Bicycles chained to railings	1	I would not like to see a Cultural Quarter
	Advertising/commercial sponsorship	1	Buskers of any type
	Street vending & magazine sellers	1	An uncoordinated set of developments with no visual cohesion for tourists and residents

Question 3 What sort of activities would you like to see in the Cultural Quarter?			
	Activities that serve residents as well as tourists	6	Food festivals/fairs 4
	Quiet activities (juggling, acrobats, poetry readings, art exhibitions)	2	Training & educational developments for undergraduates & graduates 2
	Opportunities for public debate, activities that inspire debate	2	An administrative/research centre 1
	Concerts, Live music, open air performance, free performances, dance, drama, street theatre, film/visual, outdoor cinema	41	International symposium/conference linked to Arts, Culture & Economic Development 1
	Museums, art galleries, art exhibitions, cinemas, other exhibitions, theatres, art installations	22	Somewhere to sit and reflect & relax 2
	Cafes/café culture	4	Youth creative centres 1
	Cycling & Walking, open spaces	3	A small concert venue 1
	Seating	1	Anything truly creative & cultural 1
	Bars/restaurants (more quieter ones)	5	Public linkages 2
	A vibrant mix of modern contemporary culture alongside popular and conservative activities & the historic	1	Inclusive activities, a broad spectrum of activities with some emphasis on innovation. A blend of traditional & new 1
	Public art, sculpture, Illuminating York	12	Public & community events 1
	Would like to see some of our fantastic institutions embracing modern culture alongside the historic	3	Carefully controlled artwork exhibitions as on the railings of St James Park in London, 1
	Traditional shops & one off unique cultural attractions	2	A base for artists 1
	Better designed public spaces	1	Easy access to venues 1
	Cultural Activities coordinated across organisations and well publicised	2	Carnivals/festivals/pageants 9
	Activities to introduce the arts to wider/unexpected audiences	2	Family orientated activities 2
	Street lighting	1	A second hand book shop 1
	A vibrant art centre for contemporary performance work with an intellectual programme of workshops, lectures & classes	6	Activities that respect the cultural diversity of the city (including those pertaining to the church and education) 4
	Bowling Green	1	A lake 1
	Joint activities between the attractions	1	Speakers' Corner 1
	Seasonal activities for a range of age groups	2	An outdoor concert stage 1

	Unamplified music	1	Living street based arts/crafts/interpretation	1
	Arts & Crafts markets	1	More emphasis on the evening economy	1
	Parks	1	Children's playground	1
	More activities on the river	1	The Archives	1
	Less traffic	1	Historic attractions	1
	Cultural facilities	1	Meeting places	1
	Distinctive independent shops & cafes	1	Bookshops	1
	Continuation of the Mystery Plays	2	Brass Band concerts	1
	Library	1	Arts venues	1
	Modern/ popular music in Parliament Street/St Sampson's Sq	1		
	Other comments			
	The Music Rooms (owned by CYC) should be brought back into use for music & cabaret.			

Question 4 What sort of events & activities would you choose to exclude from the Cultural Quarter?			
	Late evening noisy activities (including loud music/pop concerts)	7	Large scale performances
	Roman festivals	1	Expansion of Museums
	Wouldn't exclude things	8	Begging
	Gambling	2	Over-priced eateries
	Markets (unless they were cultural/historical)	3	Cod-heritage stuff
	Should be some restrictions on busking	1	Drinking/drugs
	Over commercialised activities	8	Ghost walks
	Traffic (just essential services, Park & Ride and disabled vehicles)	3	Railways & educational stuff
	Ball sports	1	Sports
	It is important not to present this just for tourists. York has residents, students and visitors who are not tourists	1	Hotels
	Food & drink	1	Stand up comics
	Shops (specifically large ones)	5	The emphasis on 'pub culture'
	There needs to be some set of criteria for what to include	2	Fast food outlets
	Anything drawing massed crowds & coach parties i.e. St Nicholas Fayre	2	Foreign markets
	Gift shops	1	Cyclists
	A Boards	1	
	Other comments		
	None specifically, but no 'dumbing down' please. It is sometimes difficult not to feel that the library would quite like to get rid of their books altogether. Quite a lot seem to have been removed already to create lots of useless empty space. Please can we keep what's left of the music library?		
	Very unsure about hotel use of St Leonard's Place which might intensify development. Furthermore very heavy use of the Museum Gardens should be avoided as this is an historically significant and fragile site.		

Question 5 What sort of employment opportunities would you like to see in the Cultural Quarter?			
	Jobs in the hospitality industry (hotels, bars, cafes, restaurants)	11	Stone masonry showcase 1
	Jobs in the retail sector	6	Gardeners 1
	Jobs for stallholders/market staff	2	Any that would be available to the whole city 1
	Jobs in the Creative & Cultural Industries (art, film, theatre, galleries, museums, dance, creative writing, crafts, street theatre, music etc)	34	Educational employment opportunities (teaching/adult education/workshop leaders) 3
	Jobs in tourism (all levels of jobs)	4	Police 1
	Street wardens/cleaners	3	Small businesses 3
	People doing things rather than just selling things	2	Tour Guides 3
	Graduate employment opportunities for students in arts related organisations & creative internships & student placements	10	Sustainable, career oriented and reasonably paid 1
	Low cost retail & studio areas/artists residences	6	Anything that isn't purely commercial 1
	Employment opportunities for York residents	4	Fair-trade & environmental opportunities 1
	Employ people & not machines where possible	1	
	There should be as many job opportunities as possible	4	
	Apprentice opportunities/sponsorship for up & coming artists	2	
	Educational employment opportunities (teaching/adult education/workshop leaders)	3	
	Employment in the creative technologies fields	1	
	Micro enterprises with a cultural dimension	2	
	NB: There was a definite emphasis on quality of employment throughout many of the surveys received.		

Question 6	How often do you think you might visit the riverfront, the gardens or any of the buildings in the Cultural Quarter?		
	Monthly or more frequently	80	
	1-6 months	4	
	7-12 months		
	Less frequently		
	Other comments		
	Calling it the Cultural Quarter would not alter how often I visit. Developing interesting events would do that.		
	Less than I do now if the 'developers' move in		
	I visit the riverfront regularly at the moment. If you decide to split it off by name from the rest of the city I might feel so offended I would stop visiting the area.		
	Surely the whole point of this is to attract visitors from outside, so what does it matter how many times residents visit.		
	I use the gardens as a thoroughfare several times each week and would hate to see them changed. They are the jewel in the crown of York & the area where I live.		

Question 7 Do you think you would like to visit the riverfront, the gardens or any of the buildings in the evening - in summer or in winter?			
	Yes	82	
	No	3	
	Other comments		
	Would use the area in both summer and winter		11
	Would use the area in the summer only		3
	Would use the Museum Gardens in summer more than in winter		2
	If there were a café/coffee shop open in the evening then may visit		2
	Lighting, safety & security will be important within the Museum Gardens and surrounding areas		11
	To visit in the evening there would need to be quality events		5
	In view of the success of the 'Lux Project' evening events would make an exciting addition to the city's repertoire and draw visitors in greater numbers		3
	There is a shortage of street furniture in this area		
	Unlikely to visit in the evening alone but possibly as a member of a group outing		
	Would only visit if it was not given the name of Cultural Quarter		
	Would visit in the evening but not if there were too many eating/drinking establishments		
	Please open up the riverside & gardens and make it easier for people to walk & cycle. This area is the lasting impression that all visitors have of our city.		
	As long as it didn't exclude cultural activity taking place in other parts of the city		
	This would wonderfully extend the atmosphere, attractiveness & usage of the city's resources & buildings		
	Greater diversity of evening arts. Non-alcoholic related activity and more performance space		
	I think it is crucial to use the Museum Gardens/Library/Kings Manor area. It is dying through lack of use at the moment		
	Great idea to open this area up in the evenings; if carefully done		
	Yes would use in the evenings; but I feel other places and neglected spaces are important as well		
	Night economy of York stimulated by cultural engagement is vital		
	It's crucial that the Council provide the right public environment for these developments		
	Would use in the evening. This is the time when most of the things happening in London go on.		
	Definitely in the summer when the evenings are lighter. If there were some kind of event I would be more inclined to visit over the winter		
	The riverfront should be a focus		
	There is a need to move away from alcohol - fuelled evening economy		

	The gardens are a disgraceful mess at the moment
	I already do and the atmosphere is wonderful and natural. Anything imposed on us all would reduce York to a showpiece; a themepark for visitors NOT a home for residents.
	The observatory could be opened more frequently.
	Evening bus services need to be improved. Some services do not run at all in the evening and others are very infrequent.
	City centre car parking should also be improved
	No one can answer yes, because they are all closed and there is no idea of what there might be to see.

Question 8	Would you like to see a new river crossing from the National Railway Museum to the Museum Gardens side of the river?		
	Yes	61	
	No	14	
	Other comments		
	As well as another pedestrian/cycle bridge from North Street to Coney Street/City Screen		3
	Must be for both pedestrians and cyclists (no cars or other vehicles)		4
	Pedestrian only (no cycles)		2
	A well lit, attractive and accessible footbridge to complement the river & city would be good		3
	Scarborough Bridge and existing links could be upgraded/improved & there would be no need for another bridge		8
	There is already a bridge at either end of the gardens		2
	The existing bridge & tunnel are an eyesore		2
	A bridge would be nice but not necessary		2
	A ferry or a bridge		1
	Would like another river crossing but not necessarily from the NRM. Perhaps from the main station area.		
	Expressions of concern regarding vandalism & graffiti		
	Not sure whether it should be from the NRM. The Museum Gardens/Museum may be the best introduction to the history of York and help us get tourists to visit more. However, a bridge is right		
	Perhaps this could be achieved by linking the existing Scarborough Bridge crossing with a footbridge to the NRM which would increase footfall between the NRM and the city centre.		
	It might help develop the brown field sites behind the station - this is an ecological thing to do. A cable car would be better.		
	A very sensitive area; the vista from Lendal Bridge upriver is delightful. How would a bridge impinge on that? Where in the gardens would this cut into that peaceful area? Are we talking about just pedestrians using it? If so, this would presumably be locked at dusk or at times to be established?		
	As long as it joined the riverside lane i.e.: Judi Dench Walk - not just Museum to Museum		
	Presumably in addition to Scarborough Bridge? Needs to be high enough for the boats to go under at flood times		
	It would provide a much needed link		
	This is an essential element - as a major cross link and viewing walk		
	This would be a nice mirror image of the Millennium Bridge		
	So long as this does not mean the tunnel (Marble Arch) is ignored, this should take priority		
	We need one where the old Roman Bridge was		
	It will strike the public as unnecessary expenditure, it may be the straw that breaks the camel's back		
	It's essential to link the new and old town and to make the most of the cultural linkages		

	Don't know; that's a risky/expensive idea if it wasn't planned through
	A pedestrian bridge, the design subject to an international competition
	Depending on the aesthetics of the river crossing. Would have to somehow contrast/complement the architecture of York
	Yes; but not some modern architectural monstrosity
	This is a key to the whole thing e.g. Art Gallery is only a short distance from the NRM as the crow flies but the two are a long time apart by road.
	Bridge needed from North St to Guildhall. NRM bridge would badly effect the Marygate moorings
	This would make the NRM more connected to the rest of the city centre. There could even be a cable car.
	To remove the need to use Scarborough Bridge and the road tunnel under the main railway lines (Marble Arch)
	Would need to be open 24 hours and connect to areas of activity on both sides. Modelled on the Millennium Bridge but with more resilient lighting.
	If a new footbridge to the 'teardrop' and the NRM is proposed, I would suggest that it is constructed to make the northern end a continuation of the Marygate, creating a pedestrian hub at that point where walking tourists can access the riverside via Judi Dench Way, the Museum Gardens, NRM, Marygate, the much used footpath from Clifton through St John's School and the Marygate Car Park. If at the same point, a pontoon landing was installed, floating to allow for river levels in flood, possibly with a small tourist office on it, a river shuttle of purpose built boats could be established to ferry in tourists off coaches that currently struggle into town, where there occupants have to walk in the polluted air of Gillygate to get access to the city centre.
	The City Council has a hopeless record of maintaining the white tunnel under the railway, Scarborough Bridge and the footpath beside the Post Office which does not bode good for a new bridge. A Plan to refurbish the existing would be a creative alternative. Art installations in the tunnel and a well lit and refurbished bridge would be just as good and encourage use of riverside walks. Set up a plan for proper maintenance.
	As a resident I'm indifferent but I can see that Leeman Road is a grim walk for tourists going to and from the NRM.
	A pedestrian/cycle bridge with NO steps. The siting needs to be carefully considered as it could impinge on the attractive river frontage on both sides of the river.
	The Museum Gardens must not be regarded as a thoroughfare.
	A river crossing by boat rather than bridge. If a bridge then to a design of permanent importance not to destroy 'sweep of river view'
	Not sure what the benefits would be

Question 9	Many people have commented that they dislike the name <i>Cultural Quarter</i> . What do you think it should be called?			
	Cultural Quarter is ok/I like the name	12	York West	1
	Cultural Quarter is not an appropriate/the right name	10	The Quarter	1
	Cultural Gateway	6	'City Arts Scene'	1
	Riverside/Museum' Area	1	The Heart of York	1
	York City Culture	2	Yorculture	1
	The Museum Quarter	1	York Arts	1
	St Mary's Quarter	4	York!	2
	Quartier Des Artes	1	Cultural York	1
	Cultural Ribbon	1	River Heartland	1
	Montmatre	1	Historic Core West	1
	St Mary's Abbey	1	Kings' or 'Manor' Quarter	1
	Riverfront Gardens	1	York Riversides	1
	Abbey Quarter	2	Ousebank	1
	York NNW Sector & Culture	1	Gardens Quarter	1
	Philosophical Quarter	1	Historic City of Culture	1
	Other comments			
	Concerns that the name Cultural Quarter excludes the value of the other arts venues in the city.			2
	I think it makes some people think that the project is elitist - it isn't so change the name			2
	It's not the name but the location. Culture happens across the city and confining it to a quarter is too exclusive.			
	Does it need a name? It is part of a cultural city			
	York doesn't do Quarters. Use the word consortium perhaps, which is less geographically defined			
	Nothing. I'd give it a year & the local media would probably come up with a much better one than if you tried to find one that didn't work.			
	The name is fine, especially if it encompassed smaller sub-sections i.e. artist quarter			
	Cultural Quarter includes education, religion, arts, history, shops etc and needs a broader definition.			
	The name suggests that 3/4 of York is not cultural			
	It depends on what culture you want to focus on. The local people need to feel connected with the project			
	Happy with the concept and less concerned about the name			
	It's too generic - I think the area should have several district zones of activity - overlapping & intertwining			
	No silly cutesy names please. This is York and its been here for 2000 years!			
	Path/Trail - or an arbitrary name which encourages you to explore it			
	Quarter is an overworked term			

	I do not think it should happen. The idea is anathema to me and the whole idea should be dropped.
	I have no problem with the word 'cultural' or the word 'quarter' but the word 'The' might easily lead people to think that it is regarded officially as the only quarter with cultural value, or that it is the only one that will receive attention. Either way, it will focus attention on the culture of the 'Cultural Quarter' and away from the culture of all the other quarters in York. A number of the others also deserve attention, and particularly those within and around the city walls.
	The expression 'Cultural Quarter' is an inappropriate and misleading designation for an unrelated group of projects in one area of the city, part of which is outside the Central Historic Core.
	I think Cultural Quarter does what it says and the people of York should stop thinking they will lose their heritage if they sign up to trendy branding. If I went to any city in the world which advertised a Cultural Quarter it would be the first stop on my 'must see' list.

Question 10 Please leave any other comments that you would like to be taken into consideration	
Comments in relation to York St John University	
York St John will bring benefits. The inclusion of a vibrant centre learning would cement a concept of York as a nurturing & productive city.	2
York St John must be part of this. Universities are major cultural institutions - it would be senseless and wasteful to exclude it. They could also house a number of cultural activities.	2
I would like to see York St John University included in the Quarter. The University makes a consistent contribution to the cultural life of the city through drama & dance performances, open lectures, music & specialist interest exhibitions and events.	2
This proposal should consider other sites in the city, especially York St John University. The opportunity for international conferences, events, arenas is huge	
Each year talented, intelligent, experienced graduates of York St John Uni have much to offer York but often are compelled to leave the city to move to other areas of cultural development. York St John graduates have a very successful life as producers, artists, curators, event organisers, writers and absolutely need and have the right to be included in the Cultural Quarter. Not to be included would have	
Comments in relation to Leeman Road	
I live in St Peter's Quarter and would not like to be cut off from the city centre and I would not like Leeman Road closing to traffic to/from St Peter's Quarter and the city centre. Please do not put a new road around the back of the St Peter's Quarter. My only concern is the road	
Please think carefully about the closure of Leeman Road	
There will be strong opposition to closure of Leeman Road unless an alternative route not affecting existing residential areas is provided	
Mention was made that NRM want to divert Leeman Road to make safer access from station to NRM & bring their sites together. If this receives planning permission who will pay for this? How will this effect the existing occupants of all existing properties on the present route and York Central.	
General	
What are the thoughts regarding pedestrianising Gillygate	2
I think of Manchester's Northern Quarter. Exciting fresh and lots of independent shops celebrating real culture	2
No wheel in North Street	2
The city as a site should extend its boundaries in order to include intellectual and diverse concepts for arts and creativity	
Does this go beyond attracting tourists to York? As a city that generates culture, does it include all creators?	

	How does this fit in with other plans for the city centre. Improvements/enhancements must be co-ordinated to avoid conflict of interest
	This is all wonderful but I don't want my Council Tax paying for it. Also no more shops. It should aim to include the whole city, you really can't chop a piece off and call it the 'Cultural Quarter' in the long run
	It needs further explanation about what it means in practice and how it will relate to the other proposals for the city centre, especially transport and movement
	This is a wonderful idea and could put York on the map as a sophisticated European city, adding to its current status as an historic tourist destination. Please maintain momentum, energy and commit to the highest cultural and artistic values
	Key to understanding the links between economic & cultural development in the UK & in Europe (training/skills/education & culture/economic development are key to success)
	I am very interested in cultural activities happening in Briar House resources (at Club Chambers in Museum Street) - next door to the Healing Clinic
	The idea is excellent. Tourism is our future & this should maximise our take from tourism. It returns the area to what it was pre-car and will make York much nicer. Commerce in York Central. Please do not let petty quarrels derail it. We need to pedestrianise St Leonard's - don't shy away from this.
	Keep up the good work - York is getting better all the time
	20 mph speed limit, more dedicated cycle ways, sort out the chaos around the railway station taxis, short stay car park
	Make every effort to retain a new York Wheel in, or near the re-designed grounds of the NRM
	As a resident I am not 100% in favour of a designated Cultural Quarter. I have answered the questions as though it were a done thing.
	Please ensure that the fine-tuning of the concept takes account of what has been achieved by the Minster Quarter and the nascent wider York Quarters approach
	Let's hope that this initiative bears fruit and assists York to gain World Heritage Status
	Get as much opinion as you can - London is good! Work experience in the stained glass workshop would be great. I asked a year ago when I arrived in York & got the cold shoulder. What about the sculpture yard? There are no galleries in the main shopping area which cater for modern art as it is in mainstream capital cities. Students & young people will not benefit from this exclusion of new, fresh, avant-garde creative media. If you look at London you see this on the street level and York needs to encourage this, for example Artspace near Clifford's Tower
	If nothing else, let's get the cyclist/pedestrian river crossing
	A Cultural Quarter must be based on the principle of social inclusion
	Review of traffic to see how the environment can be made more civilised and less harmful to health

	Art Gallery needs more space for pictures
	I do not like the idea of removing the railings from the Museum Gardens. Where will the archives be situated when the Art Gallery takes over this space. I support the idea of being able to walk through an opening between the Art Gallery and King's Manor
	Like the NRM plaza plans, don't pedestrianise St Leonard's Place, don't need new bridges, I would be happy for York St John University to be in as would add to education/employment offer
	Need to be forward thinking to bring funding for the Cultural Quarter area... to be one of the best most imaginative cities in Europe. Need cohesive arguments to focus the minds of fundholders. Need a bus station - circular buses round centre of York
	This looks like an exciting mixture of forward thinking and as a recent resident in York I admire the vision. I am concerned that there was no mention of the York Wheel in the coverage in The Press on 24th October as I believe this will be a critical decision with exciting future prospects.
	Development of night time economy
	Include redesign of Museum Gardens
	What will be the consistent that identifies the area as the Cultural Quarter? I.e. a specific type of paving, signage. It is difficult to envisage what it would look like.
	All of York has a 'cultural identity' - this idea looks like an opportunity to create a sort of exclusion zone. Certainly everything within the city walls and up to 100m outside should be thought of as really special. BUT we neglect areas such as Tang Hall, Bell Farm, Fulford and Heworth at our peril. It looks like an excuse for opportunists to jump on the bandwagon. Put residents first.
	Must be positive about investment. Not sure about carving up the City into Quarters - it is too small
	A lot of money is going to be spent. Use some of this to repair what we already have. The White Swan Hotel in Piccadilly; the Council has backed away from this for far too long. Micklegate is a beautiful historic entrance to this town and is now run down and a disgrace, full of loud drunks who make residents' lives a misery. The numerous areas in the town where residents live and visitors never see. The visitors may be important but there would be no town for them to visit if it wasn't for the citizens who work to provide this revenue. Please get a sense of the really important facts in this dreadful plan.
	The area is perfect already. This Cultural Quarter is artificial.
	The Ouse is an under-utilised transport resource. It could be used as a green alternative to buses or park and ride
	Would a Cultural Quarter devalue the value of cultural aspects of York outside the proposed boundaries?
	You seem to assume that all will favour the general idea. We have not yet heard much about it, but so far I am opposed to the very idea, for several reasons. One potential reason is that the more it is promoted, once established, the more it will have the effect, I think of marginalising cultural things not located in the 'quarters'. 2 universities, City Screen, Ancient Music Centre, Opera House etc to their loss. The whole idea is bogus, pretentious and naff in a city like this. People come to York to see an important old city which has evolved organically over the centuries, not a theme park of consumptionism. By all means let the various elements prosper but let each stand on its own 2 feet.

	Where is the publicity about this proposal? Where did the idea come from? Who is funding it?
	Jorvik, St Giles, Clifford's Tower and especially the Castle Museum should be included in the Quarter. A museum/part of a museum should be given over to science & engineering displays and demonstrations, particularly of renewable, appropriate & sustainable technologies.
	The Museum Gardens are one of the jewels in York's crown and must be protected at all costs. They are primarily and uniquely botanical gardens with historic and religious ruins. They are presently enjoyed by very many people of all ages and backgrounds for the ambience that results. Greatly increased through traffic could cause irreparable damage. Regular opening after dusk, without substantial security would lead to damage, vandalism and other anti-social behaviour.
	Parking and traffic flows must be solved and implemented at a very early stage.
	When considering this plan, future development of the whole city needs to be taken into consideration so that eventually the whole city is included - not separate areas. A proper pedestrian area would be nice with safe cycle routes across the city separate from pedestrians should be provided and adequate arrangements made for the elderly and less-abled. Shop mobility is not satisfactory as not all people can manage the vehicles and they are not suitable for inside shops etc.
	There is a lot of culture in the city as a whole and it seems unfair to call some things 'cultural' and, by implication, some things not. The Cultural Quarter as currently defined seems fairly narrow and doesn't allow for a forward-looking all inclusive 'culture' in York. Also hazy on what included and what not and confusing relationship (if one at all) with Minster Quarter.
	A horticultural centre should be sited in St Mary's Abbey Precinct/behind the Art Gallery as part of the proposals for the York Cultural Quarter
	Fundamentally a good idea which deserves serious support and is important to York's future
	Reinstate Guy Fawkes City Centre celebrations
	You cannot call this the Cultural Quarter. What you are saying is the rest of York is culturally inferior to this area. You are also saying that one part of the city is culturally better than the rest. People come to York for the city walls, the Jorvik Centre, the Castle Museum, Clifford's Tower, the Early Music Centre all of which will be outside the cultural centre of York if you adopt this name. After going to the meeting we went for a meal at a restaurant which overlooks the Minster. they did not know about this Cultural Quarter idea even though their restaurant would be in the area. Should you not have told them?
	We need to be given more information on paper not a single afternoon of crowded jostling stands
	Whose idea was it to signpost the 'Minster Area' instead of 'Minster'?
	York would benefit from extending its evening attractions and shopping to create a more relaxed, cosmopolitan atmosphere.
	Consider a stand alone area. I went to Berlin & came across a really unique small area of art studios/galleries/cafes. Consider ways in which York St John could contribute - community arts - or have already contributed to the city

	<p>The only factor these projects have in common is that all are seeking funding to expand their operations. Such a qualification does not of itself justify the description 'cultural'. The misnomer has given rise to the misunderstanding amongst local people (and one aspiring participant) that only these attractions comprise the 'Cultural Quarter'. The label implies that the many other 'cultural' offerings in the City such as Clifford's Tower, the Castle Museum, Fairfax House, the Jorvik Centre and so on are excluded and do not qualify as 'cultural'. This is clearly nonsense and the implication must not be allowed. In either context, the inclusion of York St John University as part of a cultural quarter is not justified and the organisation should not be included. The designation 'Cultural Quarter' should be dropped. It is an artificial construct which has no credible meaning and devalues a large part of the City's built environment.</p>
	<p>There is already an initiative called the York Quarters Project that would be a natural partner for this.</p>

Demographics

Resident	70
Lives on outskirts of York	1
Unknown	19
Visitor	2
Employee of St John's University	1
Total	93

66 received on the day of the consultation

All others received after this

This page is intentionally left blank

Cultural Quarter Ad Hoc Scrutiny Committee
16th December 2008
Update on the Local Development Framework – City Centre Area Action Plan

The Local Development Framework

- New style of plan making introduced by the Planning Act in 2004.
- The York LDF will replace the Draft Local Plan.
- Local Development Folder (LDF) is a 'folder' of documents with different roles – a more flexible system.
- Role of public consultation and Sustainability Appraisal strengthened.
- Initially 4 Development Plan Documents (DPDs) are being produced for York.
- The Core Strategy provides the overarching strategic framework for development in the area over a 20 year period. It will identify the housing, employment, retail and leisure development etc needed along with community facilities, open space and the infrastructure required to support this growth and change.
- The Core Strategy sets the objectives for the LDF and the scope and purpose of the other DPDS. The Core Strategy is closely linked with the Sustainable Community Strategy.
- The Allocations DPD identifies the sites needed to deliver the development required by the Core Strategy.
- There are two Area Action Plans being produced: York Northwest Area Action Plan (YNW AAP) and the City Centre AAP. The York Northwest AAP will deliver the development of the York Central and British Sugar sites.
- All the DPDs go through 3 stages of consultation before Examination.
- The 4 DPDs have been through the 1st stage – Issues and Options.
- The Preferred Options of all 4 DPDs will be consulted on in 2009.
- All timetabled to be adopted by the end of 2010.

Purpose of the City Centre AAP

- The City Centre AAP is being produced for a number of reasons, the primary one being the sensitivity of the city centre to change and the need to ensure that new development reflects this sensitivity.
- A successful City Centre is crucial to a successful York. The city's economy and cultural life depends on it. There is significant scope for the city centre to function better in terms of transport and movement and as a venue for festivals and events. A number of areas within the city centre are beginning to look tired.
- The AAP is a key vehicle in delivering a number of the strategic aims of the Sustainable Community Strategy. In particular the City of Culture aims for York to be a city of high quality spaces.
- The AAP is a major opportunity to improve the city centre and this is the first time a comprehensive Plan for the city centre has been produced.

- The AAP must (similar to all other aspects of the LDF) be evidence – based to be able to stand up to public examination.

The Issues and Options Report

- The Issues and Options aimed to gather as many views as possible about the current state of the city centre and people's aspirations for it's future.
- The report focussed on three key themes: Economic Vitality, Historic Environment and Community Life. The report also set out five 'opportunity areas' where the options in the three key themes could be delivered.
- One of these areas is the Cultural Quarter.

Consultation

- We consulted from 28 July to 22 September 2008 through a variety of mediums including press statements, leaflets, posters, targeted workshops, public exhibitions and stakeholder groups. Other consultations are ongoing and a partnership approach will be essential as the plan develops further.
- We received 1700 comments which have been logged and analysed. Main headlines to give a flavour. Full report to Local Development Framework Working Group in January.

Summary of Comments relevant to the Cultural Quarter - General Comments

- Revive York Festival and create an Edinburgh type festival annually.
- Co-ordination of bus stops near the railway station are confusing with a poor layout.
- Need to reduce traffic at St Leonard's Place as it increases the air pollution which is already very poor in that area.
- Museum Gardens feels isolated from the city centre and it is critical to address severance effects of St Leonard's Place.
- Improve green spaces where possible. Need areas of quiet to get away from traffic.
- Need more production/workspaces for artists to use.
- Improvements need to consider all of the community and residents as well as tourists.
- Build on what has been done already with sympathetic new improvements.
- A new green route (bridge) between the Station (arrival point for thousands of visitors) connecting Memorial Gardens over new footbridge to Museum Gardens, Art Gallery, Exhibition Square and the city centre is essential. Consider new access from riverside walk to National Railway Museum (NRM).
- Though the area would benefit from enhancement and co-ordination, this should not be to the detriment of the city as a place of work. The

City centre is primarily a place for citizens and should not be an excessively sanitised museum.

- Homeless/beggars in NRM subway area and Museum Gardens puts people off using those areas especially at night.
- Support for riverside uses on the Ouse alongside the Museum Gardens and access improvements from the City Centre from the gardens would be welcomed.
- Museum Garden railings are listed and there was already a pair of double gates to the riverside (and the railings define both the Esplanade and white Rose Walk) and so further entrances were not supported but improved entrances were.
- Emphasise the Victorian aspects of the Cultural Quarter.
- Support for land above Scarborough Bridge being improved and brought into use in an artistic/culturally interesting way. Support for university students to develop arts facilities e.g. statue walk between the station and the Minster.
- Suggestion of pedestrian way from short term parking area between Platform 1 and Royal York Hotel northwards over eastern portal of Marble Arch tunnel using a narrow area of scrubland between footpath adjacent to Royal Mail sorting office and railway to provide a level link with the existing footway across Scarborough Bridge.
- St Leonard's Place redevelopment (mixed use) should help promote cultural and evening activity in the area as well as redesigning Exhibition Square.
- York needs investment in the tourism infrastructure. Existing and new attractions plus general investment in place. Community stadium at York Northwest.
- York must continue to be a walking city for tourists. This is part of its attracting and diffusing cultural provision into the British Sugar site will add to transport needs – thus subverting sustainability objectives.
- Encourage new quality attractions but priority is to invest in existing spaces/venues such as redundant churches and other buildings.
- Emphasis on quality needed. Develop informal café/culture areas to high standard.
- Potential for a “world class” tourist offer – NRM. St Mary's and the Minster, plus all the richness of the other facilities in our area, art gallery, Theatre Royal etc.
- Need to improve public wealth in the city – link NRM to city centre as a gateway.
- What facilities does the city lack that could be provided at YNW?
- More work is needed in the city centre in fostering a “cultural quarter”.
- A cultural quarter must develop organically to have any real chance of success.
- Support for extension of the footstreets and support to maximise what we already have to provide more activities in the evening such as open air concerts in the parks and late opening of museums and galleries etc.
- Need more for families and older people to attract them into the city in the evening.

Summary of Comments relevant to the Cultural Quarter - Boundary of Cultural Quarter

Include Gillygate, all of the Railway Station, British Rail building, access from the station, North Street Gardens, Clifford's Tower, St Helen's Square, St John's University and Blossom Street. YNW and CC plans need to link together in a more coherent way as very different areas at present. *Note: Government Office have advised that Action Plan boundaries cannot overlap.*

Summary of Comments relevant to the Cultural Quarter - Name of Cultural Quarter

- Many respondents felt that the term Cultural Quarter is unsuitable - what is Culture?
- The implied elitism of Cultural and geographical isolation of quarter needs to be overcome by a strong brand and a clear communication strategy.
- "Cultural Quarter" is not a concept that is understood – seems to be interpreted as exclusive – it has backfired – once it is explained people then support the concept and idea of connectivity.
- Cultural Quarter is wrong term. All of walled city is cultural quarter. Links across the river are essential for any development.
- The term is important but the quality and knowing what it means is more important. Area needs a strong identity to galvanise stakeholders and public interest, distinctive from the retail core, YNW etc. Need explanation of true intent of "cultural quarter", as a concept not a place.
- Quarters are a good idea as it stops the city centre merging onto one and if each area has a common theme it makes the city easier to navigate.
- 95% of respondents supported the issue of the development of a cultural quarter, 5% of respondents were in partial agreement with the issue in York Northwest workshop.

Accessibility within the Cultural Quarter and the impacts on other areas of the city

An important consideration for the Cultural Quarter is how access to it and other parts of the city can be maintained or improved in the most sustainable way. The eastern boundary of the Quarter skirts the 'Footstreets' area and extends into it at High Petergate and Minster Yard. Following the receipt of a petition to extend the Footstreets into Fossgate, work to investigate possible extensions to the Footstreets was initiated by the council. However, it became apparent that this review needed to be far more extensive to consider access to and within the city centre and its effects on economic viability in the future, as part of the Area Action Plan. This review, as part of 'the City Centre Accessibility Masterplan', is to be led by the council's Transport Planning Unit. It will consider the findings of a number of projects including the Footstreets Review, Cycling City Strategy, Coach Parking Strategy, various improvements to main routes into the city and an audit of the 'Gateway Streets', to assess

where road space could be reallocated to promote sustainable transport choices and to improve the experience of visiting and navigating the city centre. It will, ultimately, form part of the evidence base for the AAP.

Following an officer workshop, in July 2008, to consider the issues (see attached) five specific areas to be investigated for accessibility and impacts of access changes, as discrete areas and in combination, were proposed:

- **Gateway Streets** Micklegate / Blossom Street, Fossgate / Walmgate, Goodramgate, Piccadilly, Stonebow / Peasholme Green and Bootham / Gillygate
- **Other potential Shopping Streets** Museum Street, Lendal, Duncombe Place, High Petergate and Castlegate
- **Cultural Quarter** St Leonard's Place, Ouse Bridge and Leeman Road
- **Castle Piccadilly** Piccadilly, Castlegate, Coppergate/Pavement and Clifford Street/Tower Street
- **York Central/York Northwest** (subject of separate Area Action Plan)

These investigations are expected to commence early in the New Year, with an anticipated completion date of July 2009, so as to keep on-track with the AAP timetable. Initially this work is due to be undertaken by officers, but may require the use of additional resource (i.e. external consultants) in order to complete it within the timescale available.

Next Steps

The immediate next steps in producing the AAP include:

- Report to LDF Working Group in January 2009 with information on the Issues and Options consultation and the comments received.
- Report to LDF Working Group again in March 2009 with recommendations on which options should be the Preferred Options with an analysis of the consultation findings, justification for any options not being progressed, the conclusions of the Sustainability Statement and any emerging evidence.
- We will also begin commissioning and undertaking a range of evidence base documents to support the AAP, with input from Yorkshire Forward.
- Form a Steering Group, which could include community input.
- Commence Accessibility studies.
- Undertake ongoing Stakeholder involvement.

Enhancing the public realm is key to much of the AAP and the idea has generated a high level of support from the public consultation. At the next stage of the plan we will undertake a quality audit of the City Centre public realm, from which the AAP will develop a series of area specific 'Public Realm Key Principles' or guidelines. Once adopted the AAP will act as the design brief for detailed design commissions.

There is no set date for the Preferred Options consultation, however we are aiming for September 2009. For Cultural Quarter public realm and development proposals to be consulted on as part of this process, we will need to have the broad concept and principals, with sketch illustrations, by Summer 2009.

The publication of and consultation on the Submission AAP is timetabled for February 2010. The document will be Submitted in May 2010, the Examination in June 2010. The aim to have the AAP Adopted by the Council in December 2010. The timetable is set in the Council's adopted Local Development Scheme.

The AAP and the Cultural Quarter

The key issue for the AAP in relation to the Cultural Quarter is the need to co-ordinate the public realm masterplanning of the wider city centre with the proposals for the public realm in the Cultural Quarter. For the AAP we intend to undertake a comprehensive public realm audit to assess the current condition of the public realm and to identify opportunities for enhancement. The findings will form the basis of the Preferred Options consultation. A public realm masterplan for the city centre will be produced for the submission AAP.

It is important that the agreed objectives for the Cultural Quarter are imbedded in both the City Centre AAP and the York Northwest AAP. This will ensure that the proposals are co-ordinated with the plans for the wider area.

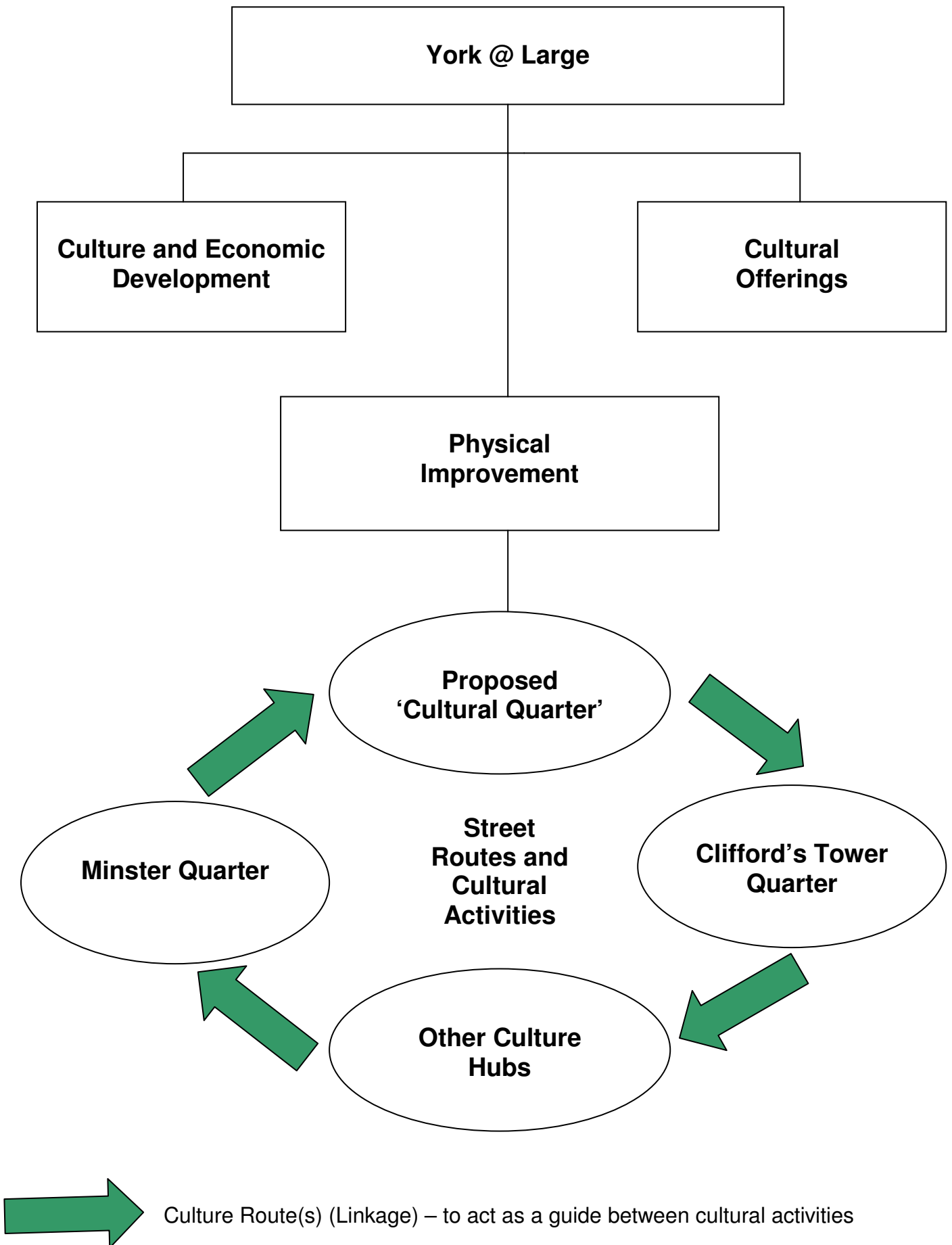
The AAP Issues and Options also consulted on how to grow and diversify York's Cultural offer as well as the evening economy, including later opening of museums and galleries. There was support for these options including providing additional facilities for cultural activities.

It is important for funding of the Cultural Quarter, that the proposals can be shown to be consistent with, and part of, an adopted statutory plan for the city. If the proposals, costs and partners were set out in the Delivery Strategies for both AAPs, this would create the potential for funding to be drawn from developer contributions, linked to policies in the AAPs, and highlight opportunities for other partner contributions and grant funding avenues.

Wendy Taylor and Ewan Taylor
City Development, City Strategy

Ian Stokes
Transport Planning, City Strategy

Culture York – Suggested Model



This page is intentionally left blank



Scrutiny Management Committee

24th March 2009

Report of the Civic, Legal & Democratic Services

Planning Enforcement Ad Hoc Scrutiny Request to Extend Timeframe

Summary

1. This report is to ask Members of SMC to agree to an extension to the timeframe originally agreed for the Planning Enforcement Ad Hoc Scrutiny Review.

Background

2. This topic was originally registered by Councillor Wiseman to explore the possibilities of speeding up the period from opening to closing planning enforcement cases and to achieve a reduction in the number of outstanding cases. She had raised concerns that a lack of resources within the Planning Enforcement Team may be contributing to delays in cases being brought to a timely conclusion. As part of the review she also proposed that the Council's approach to court action was reviewed to investigate concerns that enforcement by City of York Council had little threat of further action being taken.
3. A feasibility study and a draft remit were submitted to the Scrutiny Management Committee in July 2008 and after due consideration it was agreed to proceed with this scrutiny review based on the following remit:

Aim

4. To identify ways of bringing enforcement cases to an earlier completion through reviewing City of York Council's approach to planning enforcement and court action.

Key Objectives

- i. To understand the Council's approach in relation to planning enforcement processes including Section 106 Agreements.
- ii. To understand the City of York Council's approach to court action in relation to breaches of planning enforcement notices.
- iii. To examine why so many cases are outstanding.

- iv. To review the Council's processes and procedures to improve the handling of planning enforcement cases.
- v. To explore the impact of the Scrutiny Review on 'Powers of Enforcement – Take-Aways' on the way planning enforcement is now conducted.

Consultation

5. The following people have been consulted as part of this review:
 - Assistant Director (Planning & Sustainable Development)
 - Head of Development Control
 - Planning Enforcement Officers
 - Officers from Legal Services
 - Elected Members with links to Planning Committees
 - Area Team Leaders for East area Planning & West and City Centre Planning Committees.

Information Gathered & Reason for Request for Extension

6. During the course of this review, at both informal and formal meetings, Members of the Committee have gathered information relating to the five key objectives listed above. A draft final report has been prepared which currently includes 9 recommendations. On revisiting 2 of the recommendations (set out below), Members of the Committee decided that they should collect this information as part of the review rather than have the briefing notes presented to SMC.

Proposed Recommendations

- i. That the Head of Development Control be asked to prepare, for consideration by SMC initially, a briefing note exploring how the Land Charges Register could be used to assist the planning enforcement process.
 - ii. That a briefing note be prepared, subject to legal advice, detailing the circumstances in which Members can be used as witnesses in planning enforcement cases.
7. Another of the recommendations arising from the review makes reference to a pilot scheme being undertaken within the Building Control Department. This is a trial of various kinds of mobile technology (e.g. laptops, PDA, mobile phones, laser rules). Members have now asked for a briefing note regarding progress with this pilot scheme in order that they might make a more specific recommendation regarding possible equipment for Planning Enforcement Officers.
 8. Originally SMC had agreed that the review should take between 3 and 6 months. This timeframe has now expired but there is still a small amount of work outstanding. In light of this Members of the Committee have arranged for two extra meetings to take place. The first (15th April 2009) to receive the three

requested briefing papers and the second (18th May 2009) to receive the amended draft final report. The final report will hopefully be presented to SMC in July 2009.

Options

9. Members can either:
 - i. Agree to the request for an extension to the timeframe
 - ii. Not agree to the request for an extension to the timeframe

Analysis

10. In order that the Committee can make informed recommendations, it would be advantageous if the requested extension to the timeframe of this review were approved.

Corporate Strategy

11. The Planning Enforcement Ad Hoc Scrutiny Review relates to the following value as set out in the Corporate Strategy 2007-2011:

‘Encouraging improvement in everything we do.’

Implications

12. There are no known financial, human resources, equalities, legal, crime & disorder, information technology, property or other implications associated with the recommendations in this report.

Risk Management

13. In compliance with the Council’s risk management strategy, there are no known risks associated with the recommendations in this report.

Recommendations

14. In light of the above report Members are asked to agree to the requested extension to the timeframe of this review.

Reason: In order that further relevant information may be considered by the Planning Enforcement Ad Hoc Scrutiny Committee.

Contact Details

Author:

Tracy Wallis
Scrutiny Officer
Scrutiny Services
Tel: 01904 551714

Chief Officer Responsible for the report:

Quentin Baker
Head of Civic, Legal & Democratic Services
Tel: 01904 551004

Report Approved

Date 12 March 2009

Specialist Implications Officer(s)

None

Wards Affected:

All

For further information please contact the author of the report

Background Papers:

None

Annexes

None



Scrutiny Management Committee**24 March 2009****Report of the Scrutiny Manager****Local Government & Public Involvement in Health Act 2007 –
Introduction of Councillor Call for Action****Summary**

1. This report informs Members that as from 1 April 2009, Councillor Call for Action (CCfA) will come into force, and highlights how the Overview & Scrutiny function in York has responded to the forthcoming new requirements of the Local Government & Public Involvement in Health Act 2007.

Background

2. Section 119 of the Local Government and Public Involvement in Health Act 2007 inserts a section into the Local Government Act 2000, requiring Councils to ensure its overview and scrutiny arrangements enable any Member to refer a local government matter (except for those which are excluded) to the relevant overview and scrutiny committee. The regulations define the excluded matters from being the subject of a councillors call for action.
3. Excluded Matters
 - any matter relating to a planning decision
 - any matter relating to a licensing decision
 - any matter relating to an individual or entity in respect of which that individual or entity has a right of recourse to a review or right of appeal conferred by or under any enactment
 - any matter which is vexatious, discriminatory or not reasonable to be included in the agenda for, or to be discussed at, a meeting of the overview and scrutiny committee or at a meeting of a sub-committee of that committee.

Analysis

4. CCfA is specifically for issues affecting single wards which would be taken up by the ward Councillor. Councillors will from their knowledge of their area and its people, be able to identify issues which are of significant concern to their communities. Ward meetings / advice surgeries will also allow members of the public to raise local and neighbourhood matters with their ward Councillors.

Under this provision, Councillors will in effect be encouraged to play a gate keeping role in deciding how to resolve matters of concern.

5. CCfA is seen as sitting alongside existing mechanisms for resolving issues and is a final option for when all others have not led to resolution i.e. the ward Councillor will have tried all other measures before it gets to CCfA. It also needs to be clear that a CCfA may still not resolve the problem, just provide an opportunity to take it further.
6. Councillors may require some support in identifying ways in which they can attempt to resolve an issue before it escalates to a CCfA. In York, how this support is provided and by whom, is yet to be addressed and therefore the issue has been raised at CMT level.
7. Where informal approaches do not work and after due consideration of the public concerns, a Councillor may deem it appropriate to refer the issue to scrutiny by registering the topic for review. Under CCfA such referrals will be a local Councillor's decision with the relevant scrutiny committee constitutionally responsible for considering how to handle that referral.
8. In York, new working practices have been introduced in Scrutiny, designed to help the scrutiny process but which will also provide the mechanism for responding to CCfA. The topic registration form has been updated to help identify those topics registered as a result of an unresolved CCfA, and to allow Members to provide all the necessary information on what actions they had taken to try to resolve the issue prior to registering it as a scrutiny topic. This will inform the feasibility report produced, which in turn should assist the relevant scrutiny committee to fully understand the issue and consider the ways in which it could be reviewed.
9. The scrutiny committee carrying out the review would be able to use its powers under the Act to invite representatives from partner organisations to attend and to request information. CCfA also provides opportunities for partners to work together as they may involve partners, although a CCfA must relate to a 'local government matter'.
10. In addition, the Police and Justice Act 2006 required that crime and disorder issues be considered by a 'crime and disorder' scrutiny committee, or in authorities with subject based committees CCfA should go to the relevant committee. In York, as a result of the forthcoming scrutiny restructure, this would be the Community Safety / Safer City Scrutiny Committee (name still to be confirmed), which will come into being following Annual Council in May.
11. Provisions coming into force on 1st April 2009
The following provisions of the Act shall come into force on 1st April 2009 — Statutory Instrument 3261
 - Section 119 (each authority operating executive arrangements to ensure any member can refer a matter to overview and scrutiny committee where local problems have arisen and other methods of resolution have been exhausted – see CCfA provisions above)

- Section 120 (power of overview and scrutiny committee to question members of the authority)
- Section 121 (power to require information from partner authorities – these would normally be partner authorities for the purpose of local area agreements except for the police authority which is covered under the Police and Justice Act 2006)
- Section 122 (empowers a scrutiny committee to publish reports and recommendations, where it does this it must give the local authority or executive notice in writing, specifying the steps which the local authority or executive must take within two months of receiving the report or recommendation. These steps include responding to the report/recommendations and if published, publishing a response. There are provisions about confidential and exempt information)
- Section 127 (overview and scrutiny committees: consequential amendments e.g. each authority must have a scrutiny committee tasked with dealing with Health)
- Section 128 (transitional provision e.g. to ensure a mechanism is in place from 1st April to scrutinise an issue relating to Health prior to setting up a Health Scrutiny Committee if one does not currently exist)

Options

11. There are no options as this report is for information only.

Implications

12. There are no Financial, Legal, HR or other implications associated with the recommendation in this information only report.

Corporate Priorities

13. Supporting the CCfA process will enable Members to use the new powers of section 119 of the Local Government & Public Involvement in Health Act 2007, to bring about positive change in their Wards. This in turn could support many of the corporate priorities depending on the type of issue to be resolved.

Risk Management

14. There are no risks associated with the recommendation in this report.

Recommendations

15. Members are asked to note the content of this information only report.

Reason: To raise awareness of the forthcoming introduction of CCfA on 1st April 2009.

Contact Details

Author:

Melanie Carr
Scrutiny Officer
Scrutiny Services
Tel No.01904 552063

Chief Officer Responsible for the report:

Dawn Steel
Scrutiny Manager

Report Approved

Date 12 March 2009

Specialist Implications Officer(s) N/A

Wards Affected:

All

For further information please contact the author of the report